

CHICAGO O'HARE INTL (ORD)

From GIBNS: RNAV-1 GPS required.

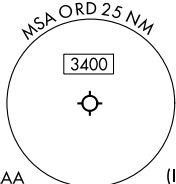
ALSF-2

MISSED APPROACH: Climb to 4000 on heading 093° and CGT VORTAC R-336 to CGT VORTAC and hold.

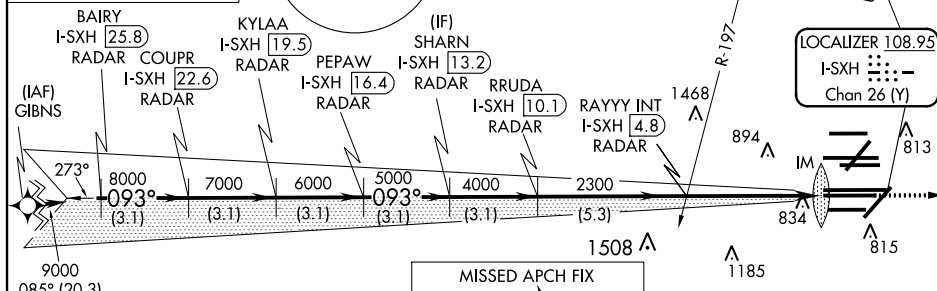
O'HARE TOWERS
128.15 348.0(Rwy 9L/27R) **133.0 348.0**(10R/28L)
120.75 121.15 126.9 132.7 348.0(CENTER)
PRM 119.625

GND CON		(TWR CENTER)
124.125	(TWR NORTH)	121.75 (OBND)
118.05	(TWR SOUTH)	121.9 (IBND)
226.675	(ALL TWRS)	


ALTERNATE MISSED
APCH FIX

CLNC DE
121,6

CPDLC



MISSED APCH FIX

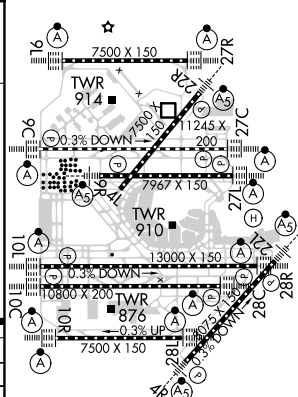
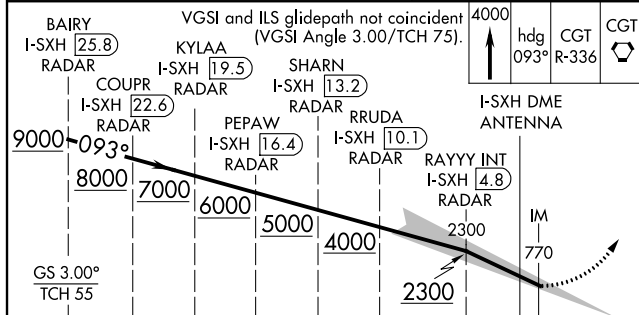
CHICAGO HEIGHTS
CGT 
114.2
Chan 89

R-336

156°

336°

ELEV 680	D	TDZE 669
----------	----------	----------



HIRL all Rwys
TDZ/CL all Rwys except 4L

→	3.1 NM	3.1 NM	3.1 NM	3.1 NM	3.1 NM	→ 5.3 NM →	→ 5 NM →	1091°	→
CATEGORY	A		B		C		D		
S-ILS 10C	CAT II RA 102/12 100 DA 769								
S-ILS 10C	CAT III RVR 06								

CATEGORY II and III ILS - SPECIAL AIRCREW
& AIRCRAFT CERTIFICATION REQUIRED

CHICAGO, ILLINOIS
Amdt 1A 03JAN19

41°59'N-87°54'W

CHICAGO O'HARE INTL (ORD)

ILS PRM RWY 10C (CAT II & III) (CLOSE PARALLEL)