

ILS or LOC RWY 4R
CHICAGO O'HARE INTL (ORD)

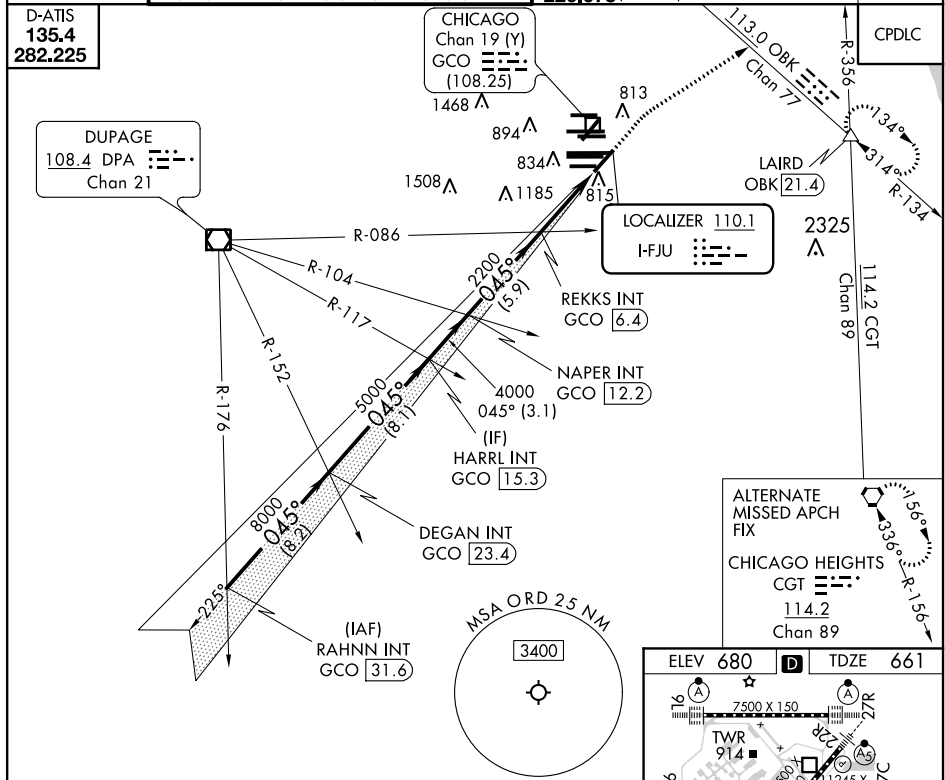
MISSED APPROACH: Climb to 1200 then climbing right turn to 4000 on heading 060° and OBK VOR/DME R-134 to LAIRD INT/OBK 21.4 DME and hold.

T Simultaneous approach authorized.

| |
|---------|
| D-ATIS |
| 135.4 |
| 282.225 |

CHICAGO
Chan 19 (Y)
GCO $\equiv \cdot \cdot \cdot$
(108.25)

| | |
|------------|----------------------|
| GND CON | (TWR CENTER) |
| TWR NORTH) | 121.75 (OBND) |
| TWR SOUTH) | 121.9 (IBND) |
| (ALL TWRS) | |

CLNC DEL
121.6

ALTERNATE
MISSED APCH

CHICAGO HEIGHTS
CGT $\equiv \cdot \cdot \cdot$
114.2
Chan 89

ELEV 680 [D] TDZE 661

HRL all Rwy's
TDZ/CL all Rwy's except 4L

FAF to MAP 4.4 NM

| Knots | 60 | 90 | 120 | 150 | 180 |
|---------|------|------|------|------|------|
| Min:Sec | 4:24 | 2:56 | 2:12 | 1:46 | 1:28 |