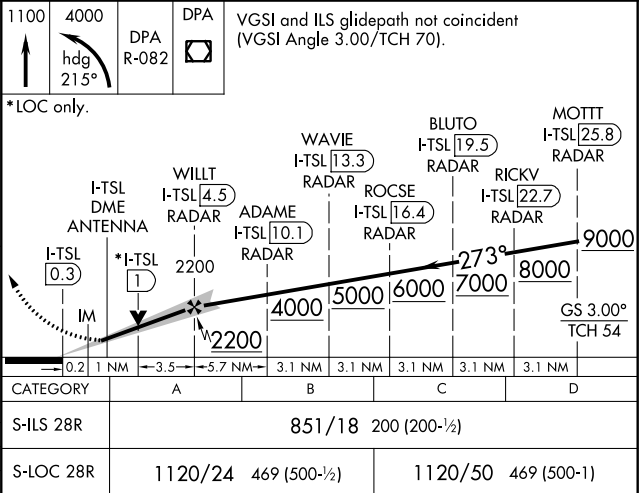
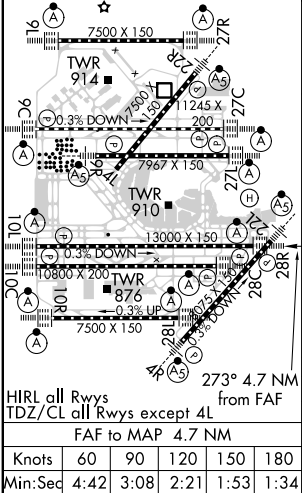
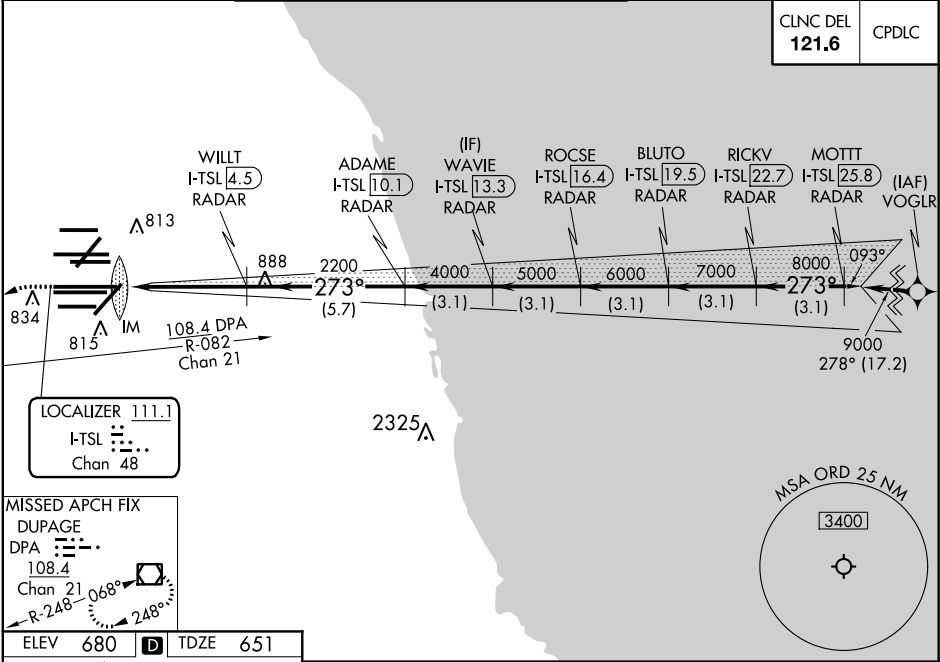


LOC/DME I-TSL	APP CRS	Rwy ldg	13000
111.1	273°	TDZE	651
Chan 48		Apt Elev	680

ILS or LOC RWY 28R
CHICAGO O'HARE INTL (ORD)

From VOGLR: RNAV 1-GPS required. Aircraft not GPS equipped - RADAR required for procedure entry. DME or RADAR required.	ALS-F-2	MISSED APPROACH: Climb to 1100 then climbing left turn to 4000 on heading 215° and DPA VOR/DME R-082 to DPA VOR/DME and hold.
Simultaneous approach authorized.		

D-ATIS	CHICAGO APP CON	O'HARE TOWERS	GND CON	(TWR CENTER)
135.4		128.15 348.0 (Rwy 9L/27R)	124.125 (TWR NORTH)	121.75 (OBND)
282.225	119.0 292.125	133.0 348.0 (10R/28L)	118.05 (TWR SOUTH)	121.9 (IBND)
		120.75 121.15 126.9 132.7 348.0 (CENTER)	226.675 (ALL TWRs)	



EC-3, 03 DEC 2020 to 31 DEC 2020

EC-3, 03 DEC 2020 to 31 DEC 2020