

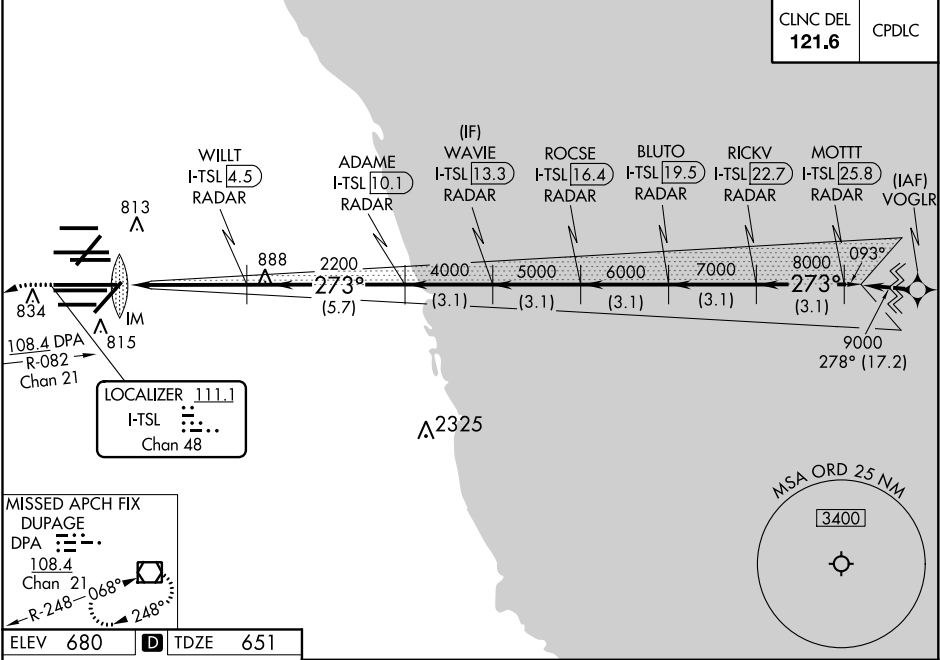
LOC/DME I-TSL 111.1 Chan 48	APP CRS 273°	Rwy ldg 13000 TDZE 651 Apt Elev 680	ILS RWY 28R (CAT II & III) CHICAGO O'HARE INTL (ORD)
---	------------------------	--	--

From VOGLR: RNAV 1-GPS required.
Aircraft not GPS equipped - RADAR required for procedure entry.
DME or RADAR required.

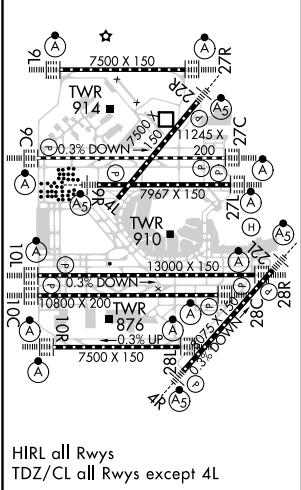
ALSIF-2

MISSED APPROACH: Climb to 1100 then climbing left turn to 4000 on heading 215° and DPA
VOR/DME R-082 to DPA VOR/DME and hold.

D-ATIS 135.4 282.225	CHICAGO APP CON 119.0 292.125	O'HARE TOWERS 128.15 348.0 (Rwy 9L/27R) 133.0 348.0 (10R/28L) 120.75 121.15 126.9 132.7 348.0 (CENTER)	GND CON (TWR CENTER) (TWR NORTH) (TWR SOUTH) (ALL TWRs) 124.125 121.75 118.05 121.9 226.675
--	---	--	---



ELEV 680	TDZE 651
----------	----------



1100

4000

DPA

hdg 215°

R-082

VGSI and ILS glidepath not coincident (VGSI Angle 3.00/TCH 70).

WILLT

ADAME

WAVE

ROCSE

BLUTO

MOTTT

IM

754

2200

4000

5000

6000

7000

9000

273°

GS 3.00°

TCH 54

CATEGORY	A	B	C	D
S-ILS 28R	CAT II RA 97/12 100 DA 751			
S-ILS 28R	CAT III RVR 06			

CATEGORY II & III ILS - SPECIAL AIRCREW & AIRCRAFT CERTIFICATION REQUIRED