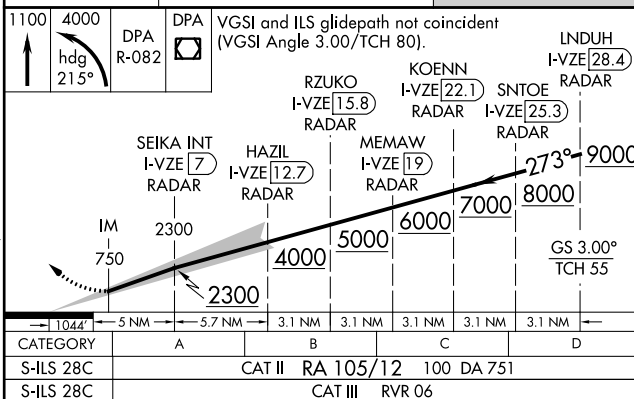


**ILS RWY 28C (CAT II & III)**  
CHICAGO O'HARE INTL (ORD)

**MISSED APPROACH:** Climb to 1100 then climbing left turn to 4000 on heading 215° and DPA VOR/DME R-082 to DPA VOR/DME and hold.

**MISSED APPROACH:** Climb to 1100 then climbing left turn to 4000 on heading 215° and DPA VOR/DME R-082 to DPA VOR/DME and hold.

CPDLC

CATEGORY II & III ILS - SPECIAL AIRCREW  
& AIRCRAFT CERTIFICATION REQUIRED