

| | | |
|---|------------------------|---|
| LOC/DME I-HKH 111.5 Chan 52 | APP CRS 047° | Rwy Idg TDZE 619 Apt Elev 620 |
|---|------------------------|---|

ILS or LOC RWY 4R

CHICAGO MIDWAY INTL (MDW)

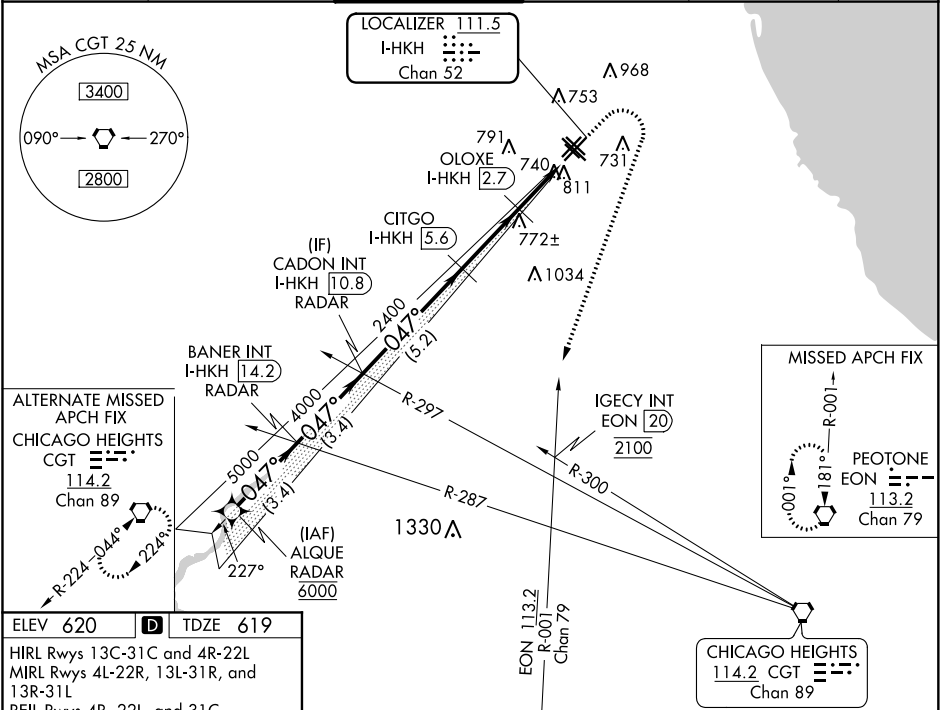
RNAV 1-GPS or RADAR required for procedure entry.
DME required for LOC only.

▼ Circling Rwy 31R NA at night.

▲ Rwy 4R helicopter visibility reduction below RVR 4000 NA.

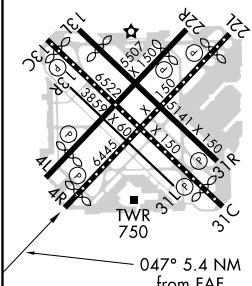
MISSED APPROACH: Climb to 1100 then climbing right turn to 2100 on heading 230° and on EON VORTAC R-001 until crossing IGECY INT/EON 20 DME, then climb to 2600 to EON VORTAC and hold.

| | | | | | |
|-------------------------|---|--------------------------------------|--------------------------|----------------------------|-------|
| D-ATIS 132.75 | CHICAGO APP CON 128.2 353.875 | MIDWAY TOWER 135.2 269.125 | GND CON 121.65 | CLNC DEL 124.625 | CPDLC |
|-------------------------|---|--------------------------------------|--------------------------|----------------------------|-------|



ELEV 620 D TDZE 619

HIRL Rws 13C-31C and 4R-22L
MIRL Rws 4L-22R, 13L-31R, and 13R-31L
REIL Rws 4R, 22L, and 31C
RLS Rws 13C and 31C



| | | | | |
|---|----------------------|----------------------|-----------------|-----------------|
| VGSI and ILS glidepath not coincident (VGSI Angle 3.00/TCH 66). | | | | |
| ALQUE RADAR | BANER INT I-HKH 14.2 | CADON INT I-HKH 10.8 | CITGO I-HKH 5.6 | OLOXE I-HKH 2.7 |
| 6000 | 5000 | 4000 | 2400 | 2400 |
| GS 3.00° TCH 50 | 3.4 NM | 3.4 NM | 5.2 NM | 2.9 NM |
| CATEGORY | | | | |
| S-ILS 4R | | | | |
| S-LOC 4R | | | | |
| CIRCLING | | | | |