

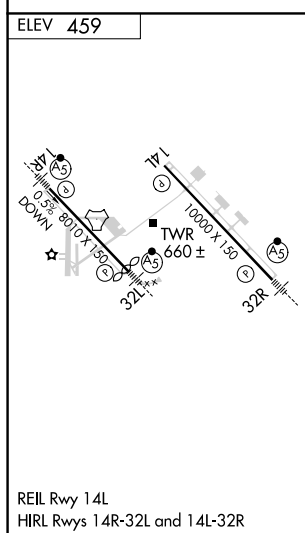
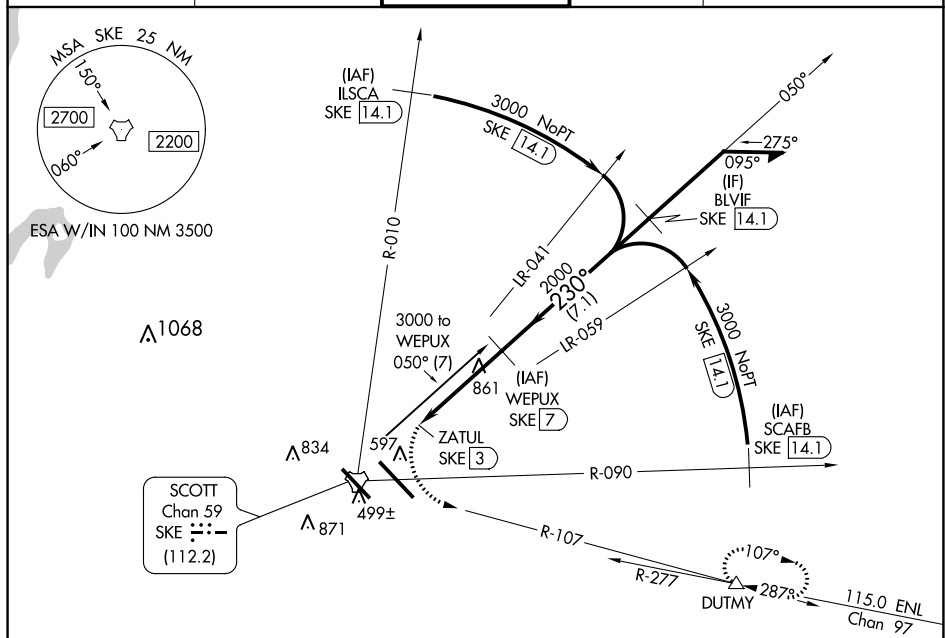
TACAN SKE Chan <b>59</b> (112.2)	APP CRS <b>230°</b>	Rwy Idg TDZE Apt Elev	<b>N/A</b> <b>N/A</b> <b>459</b>
----------------------------------------	------------------------	-----------------------------	----------------------------------------

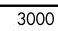


TACAN-A  
SCOTT AFB/MIDAMERICA (BLV)

**T** RADAR required. When local altimeter setting not received, use  
**A** St Louis Downtown altimeter setting; increase all MDA 60 feet;  
 ASR increase Circling Cat C/D/E visibility  $\frac{1}{4}$  mile.

**MISSED APPROACH:** Climbing left turn to 3000 on heading 130° and SKE TACAN R-107 to DUTMY/SKE 14.1 DME and hold.

D-ATIS *	ST LOUIS APP CON	SCOTT TOWER	GND CON	CLNC DEL
128.7 256.7	125.2 281.5	128.25 253.5	119.2 275.8	119.875 225.4 263.025



<div>3000</div> <div></div> <div>hdg 130°</div>		<div>SKE</div> <div>R-107</div>	<div>DUTMY</div> <div>△</div>	<div>WEPUX</div> <div>SKE <u>7</u></div>					
<div></div>		<div>ZATUL</div> <div>SKE <u>3</u></div>		<div></div> <div><u>2000</u></div>		<div>BLVIF</div> <div>SKE <u>14.1</u></div>		<div>Remain</div> <div>within 15 NM</div>	
				4 NM		7.1 NM			
CATEGORY	A		B		C		D		E
<b>C</b> CIRCLING	1180-2¼		721 (800-2¼)		1240-2¼ 781 (800-2¼)		1240-2½ 781 (800-2½)		1240-2¾ 781 (800-2¾)