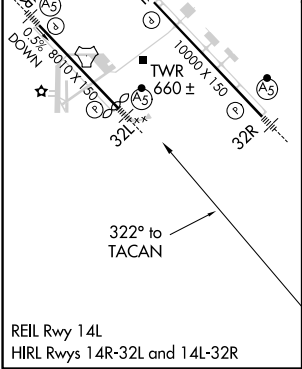
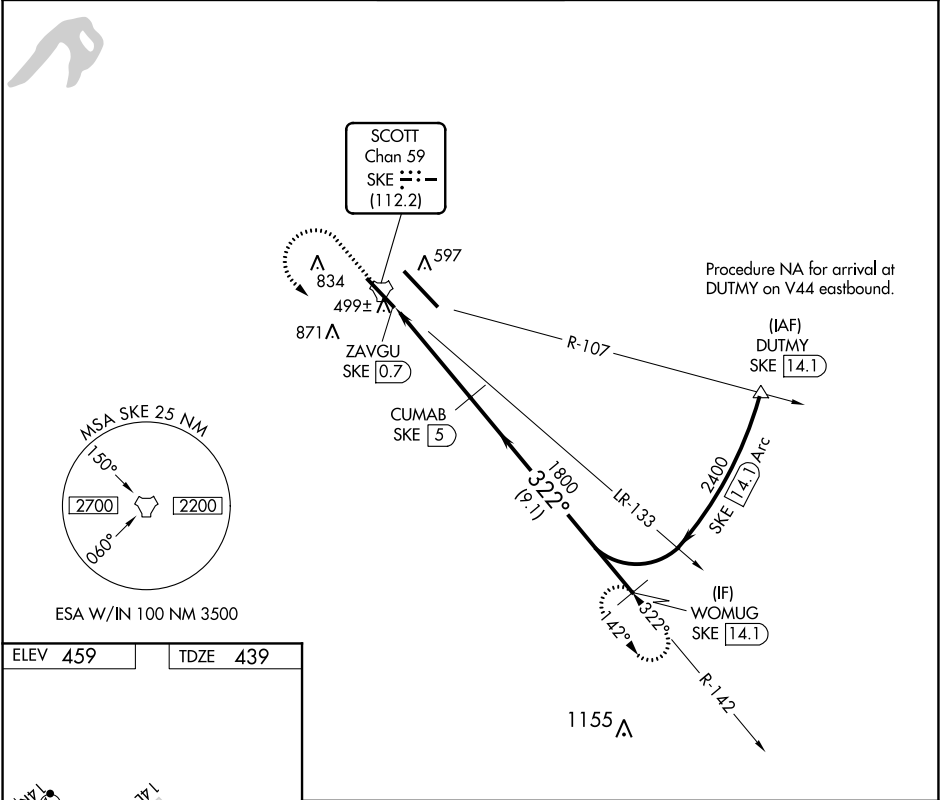


TACAN SKE Chan <b>59</b> (112.2)	APP CRS <b>322°</b>	Rwy Idg TDZE <b>439</b> Apt Elev <b>459</b>
--	------------------------	---

TACAN RWY 32L  
SCOTT AFB/MIDAMERICA (BLV)

NA ASR	For inoperative MALSR, increase S-32L Cat C/D/E visibility to 1 3/8 mile.	MALSR 	MISSED APPROACH: Climb to 1500 then climbing left turn to 2400 on SKE R-142 to WOMUG/14.1 DME and hold.
-----------	--	-----------	---

D-ATIS ★ <b>128.7 256.7</b>	ST LOUIS APP CON <b>125.2 281.5</b>	SCOTT TOWER <b>128.25 253.5</b>	GND CON <b>119.2 275.8</b>	CLNC DEL <b>119.875 225.4 263.025</b>
--------------------------------	--	------------------------------------	-------------------------------	--



	1500	2400	WOMUG SKE [14.1]		WOMUG SKE [14.1]
	↑	SKE R-142		CUMAB SKE [5]	
			ZAVGU SKE [0.7]	1800	2400
			≤ 2.81° TCH 72		
			1.3 NM	3 NM	9.1 NM
CATEGORY	A	B	C	D	E
S-32L	920/24 481 (500-1/2)		920/50 481 (500-1)		920/60 481 (500-1 1/4)
CIRCLING	1000-1 541 (600-1)	1080-1 621 (700-1)	1240-2 1/4 781 (800-2 1/4)	1240-2 1/2 781 (800-2 1/2)	1240-2 3/4 781 (800-2 3/4)