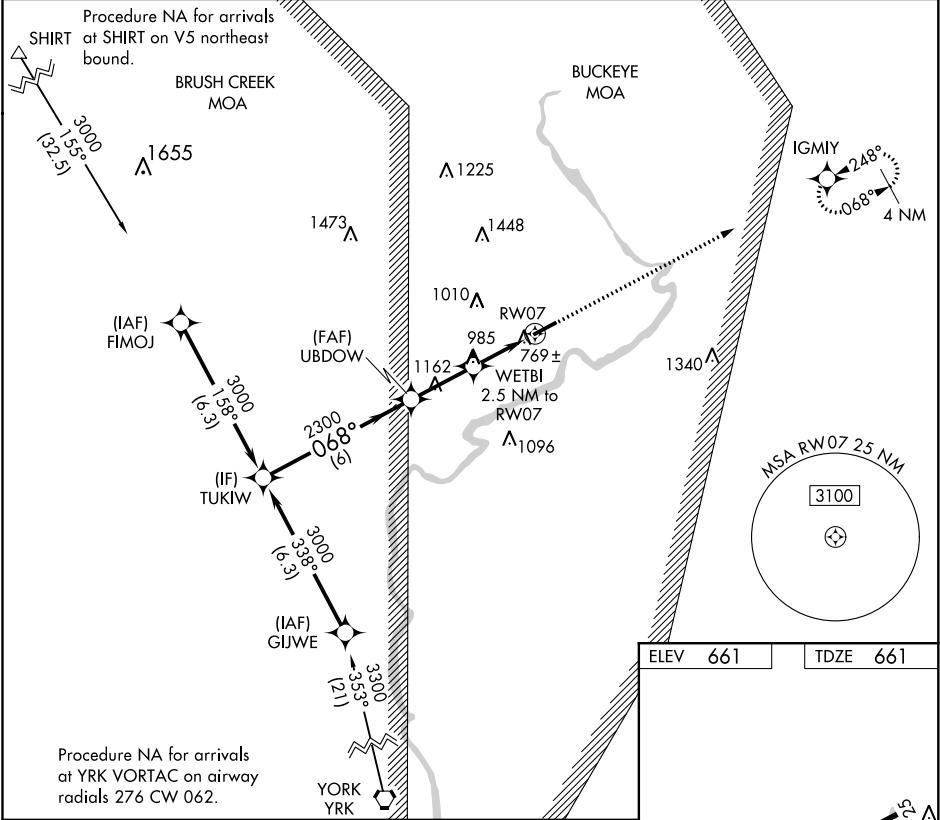


WAAS CH 56437 W07A	APP CRS 068°	Rwy Idg 4899 TDZE 661 Apt Elev 661
--	------------------------	---

RNAV (GPS) RWY 7
PIKE COUNTY (EOP)

NA DME/DME RNP-0.3 NA. Procedure NA at night. Helicopter visibility reduction below 1 SM NA. When local altimeter setting not received, use Chillicothe altimeter setting and increase all MDA 60 feet, increase LP and LNAV visibility Cat C/D and Circling Cat A/B/C ¼ mile.	MISSED APPROACH: Climb to 3000 direct IGMYY and hold.
--	--

AWOS-A 118.4	PMH AWOS-3 125.175	INDIANAPOLIS CENTER 135.575 290.5	UNICOM 123.0 (CTAF) 0
------------------------	------------------------------	---	---------------------------------



Visual Segment - Obstacles.				
TUKIW 3000		UBDOW 2300		WETBI 2.5 NM to RW07 1480
068°		068°		068° to RW07
6 NM		2.5 NM		2.5 NM
CATEGORY	A	B	C	D
LP MDA	1020-1 359 (400-1)			
LNAV MDA	1300-1	639 (700-1)	1300-1¾	639 (700-1¾)
CIRCLING	1440-1 779 (800-1)	1460-1 799 (800-1)	1520-2½ 859 (900-2½)	1640-3 979 (1000-3)

