

LOC/DME I-FQS 110.55 Chan 42 (Y)	APP CRS 052°	Rwy Idg 11004 TDZE 744 Apt Elev 744
--	------------------------	--

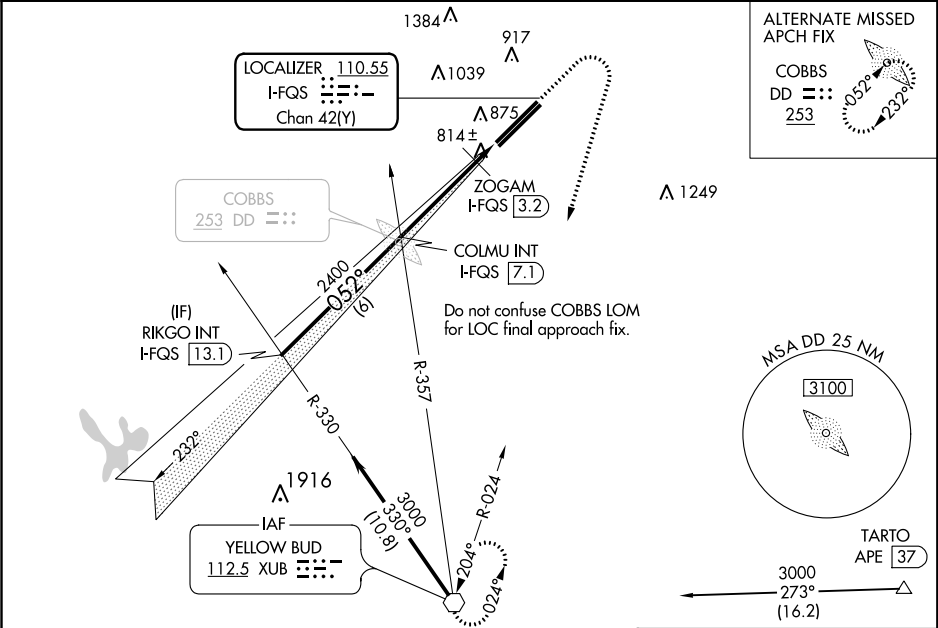
ILS or LOC RWY 5L
RICKENBACKER INTL (LCK)

⚠ Circling NA northwest of Rwy 5L-23R. When local altimeter setting not received, use John Glenn Columbus Intl altimeter setting and increase all DA 36 Feet and all MDA 40 feet, increase S-LOC 5L visibility Cat C and D ½ mile; increase ZOGAM fix minimums visibility Cat C and D ¾ mile.

MALSR

MISSED APPROACH: Climb to 1500 then climbing right turn to 3000 direct XUB VOR and hold.

ATIS 132.75	COLUMBUS APP CON 134.0 279.6	RICK TOWER 120.05 348.4	GND CON 125.275 275.8	CLNC DEL 125.275 275.8
-----------------------	--	-----------------------------------	---------------------------------	----------------------------------



ELEV **744** **D** TDZE **744**

VGSI and ILS glidepath not coincident (VGSI Angle 3.00/TCH 70).

RIKGO INT I-FQS 13.1

COLU INT I-FQS 7.1

ZOGAM I-FQS 3.2

I-FQS 2

XUB

GS 3.00° TCH 55

3000

2400

2400

1180

6 NM

3.8 NM

1.2 NM

† 1220 when using John Glenn Columbus Intl altimeter setting.

*LOC only.

CATEGORY	A	B	C	D
S-ILS 5L	944-½		200 (200-½)	
S-LOC 5L	1180-½	436 (500-½)	1180-¾	436 (500-¾)
CIRCLING	1180-1 436 (500-1)	1200-1 456 (500-1)	1200-1½ 456 (500-1½)	1300-2 556 (600-2)
ZOGAM FIX MINIMUMS				
S-LOC 5L	1080-½		336 (400-½)	
CIRCLING	1180-1 436 (500-1)	1200-1 456 (500-1)	1200-1½ 456 (500-1½)	1300-2 556 (600-2)

TWR 852

11902 X 150

12102 X 200

052° 5 NM from FAF

TDZ/CL Rwy 5R

REIL Rwy 23R

HIRL Rwy 5L-23R and 5R-23L

FAF to MAP 5 NM

Knots	60	90	120	150	180
Min:Sec	5:00	3:20	2:30	2:00	1:40

EC-2, 03 DEC 2020 to 31 DEC 2020

EC-2, 03 DEC 2020 to 31 DEC 2020