

LOM JV	APP CRS	Rwy Idg	7000
331	182°	TDZE	476
		Apt Elev	476

NDB RWY 18

CLARK RGNL (JVY)

RADAR required for procedure entry.

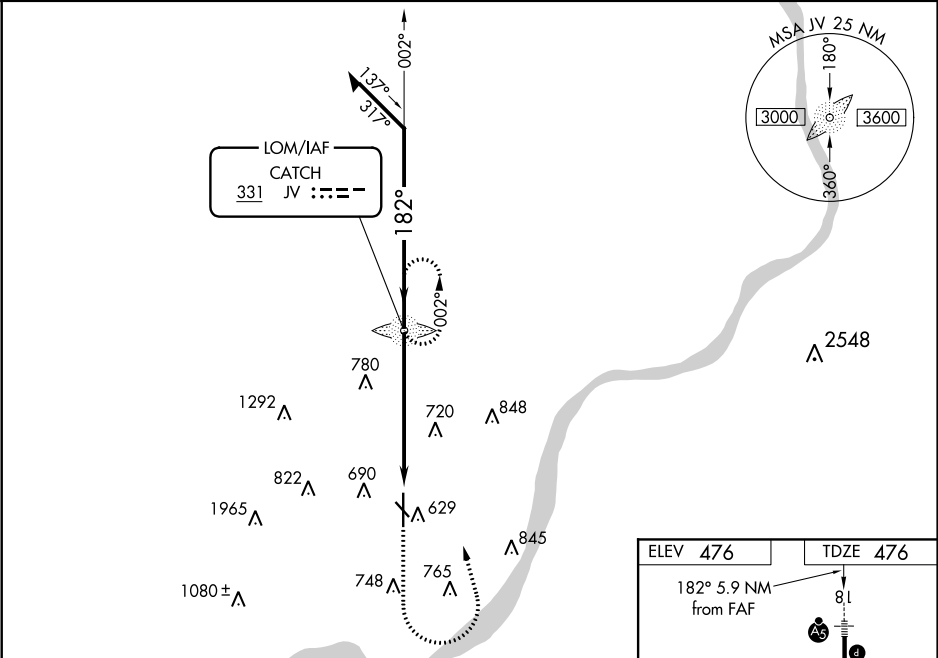
NA

Circling NA for Cat D southwest of Rwy 14 and 36. Circling Rwy 14, 32 NA at night. For inop ALS, increase S-18 Cats A and B visibility to 1 SM and Cats C and D to 1½ SM. When local altimeter setting not received, use Louisville Muhammad Ali Intl altimeter setting and increase all MDAs 40 feet and Circling visibility Cat C ½ SM. For inop ALS when using Louisville Muhammad Ali Intl altimeter setting, increase S-18 Cats A and B visibility to 1 SM.

MALSR

MISSED APPROACH: Climb to 1500 then climbing left turn to 2500 direct CATCH LOM and hold.

AWOS-3	LOUISVILLE APP CON	CLNC DEL	UNICOM
118.575	132.075 327.0	118.05	122.7 (CTAF) 0



1500	2500	JV	JEFFERSONVILLE, INDIANA			
JV LOM				VGSi and descent angles not coincident (VGSi Angle 3.00/TCH 50). Remain within 10 NM		
002°				2600		
182°				2500		
3.18° TCH 45				5.9 NM		
CATEGORY	A	B	C	D	REIL Rwy 14 and 32	
S-18	1080-¾	604 (700-¾)	1080-1⅓	604 (700-1⅓)	REIL Rwy 18 and 36	
					MIRL Rwy 14-32 and 18-36	
					FAF to MAP 5.9 NM	
CIRCLING	1080-1	604 (700-1)	1080-1¾	1100-2		
					Knots	
					Min:Sec	
					60 90 120 150 180	
					5:54 3:56 2:57 2:22 1:58	