

LOC I-JVY	APP CRS	Rwy Idg	7000
111.7	182°	TDZE	478
		Apt Elev	478

ILS or LOC RWY 18

CLARK RGNL (JVY)

ADF required. RADAR required for procedure entry.

▼

NA

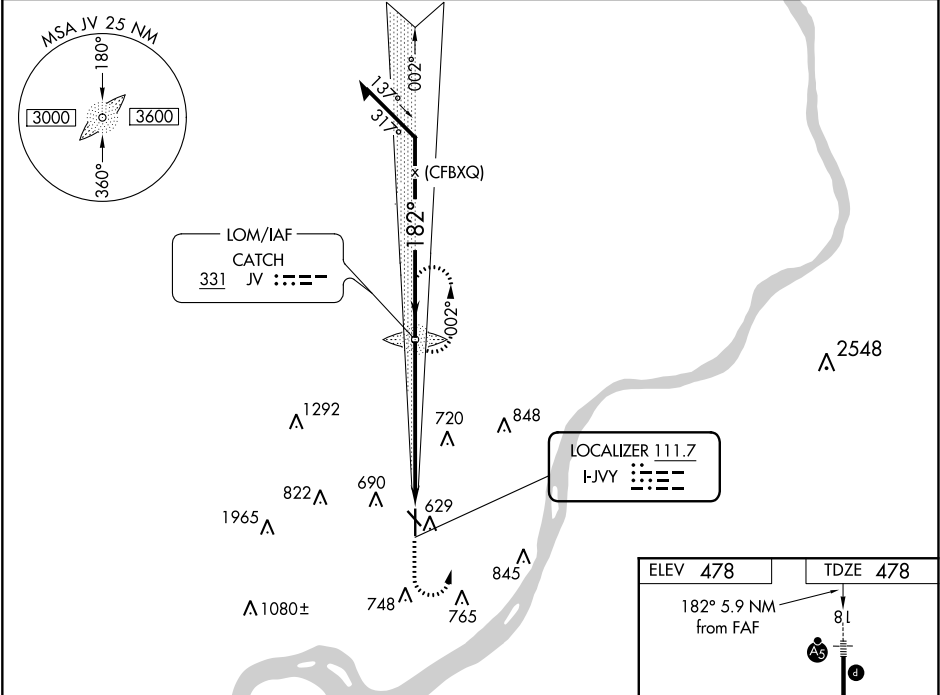
Circling NA for Cat D southwest of Rws 14 and 36. Circling Rwy 14, 32 NA at night.

For inop ALS, increase S-LOC 18 Cats C and D visibility to 1 3/8 SM. When local altimeter setting not recieved, use Louisville Muhammad Ali Intl altimeter setting: increase DA to 708; increase all MDAs 40 feet, S-LOC 18 Cats C and D visibility 1/8 SM and Circling Cat C visibility 1/4 SM.

MALSR

MISSED APPROACH:  
Climb to 1500 then  
climbing left turn to  
2500 direct CATCH  
LOM and hold.

AWOS-3	LOUISVILLE APP CON	CLNC DEL	UNICOM
118.575	132.075 327.0	118.05	122.7 (CTAF) 1



1500

2500

JV

Autopilot coupled approach NA below 1145 feet.

JV LOM

2425

002°

182°

2500

2600

GS 3.00°

TCH 51

5.9 NM

Remain within 10 NM

CATEGORY	A	B	C	D
S-ILS 18		678-1/2	200 (200-1/2)	
S-LOC 18	980-1/2	502 (600-1/2)	980-1	502 (600-1)
CIRCLING	1000-1 522 (600-1)	1040-1 562 (600-1)	1060-1 1/2 582 (600-1 1/2)	1100-2 622 (700-2)

ELEV 478

TDZE 478

182° 5.9 NM from FAF

8.1

7000 X 100

3892 X 1/2

36

REIL Rws 14 and 32

REIL Rws 18 and 36

MIRL Rws 14-32 and 18-36

FAF to MAP 5.9 NM

Knots	60	90	120	150	180
Min:Sec	5:54	3:56	2:57	2:22	1:58