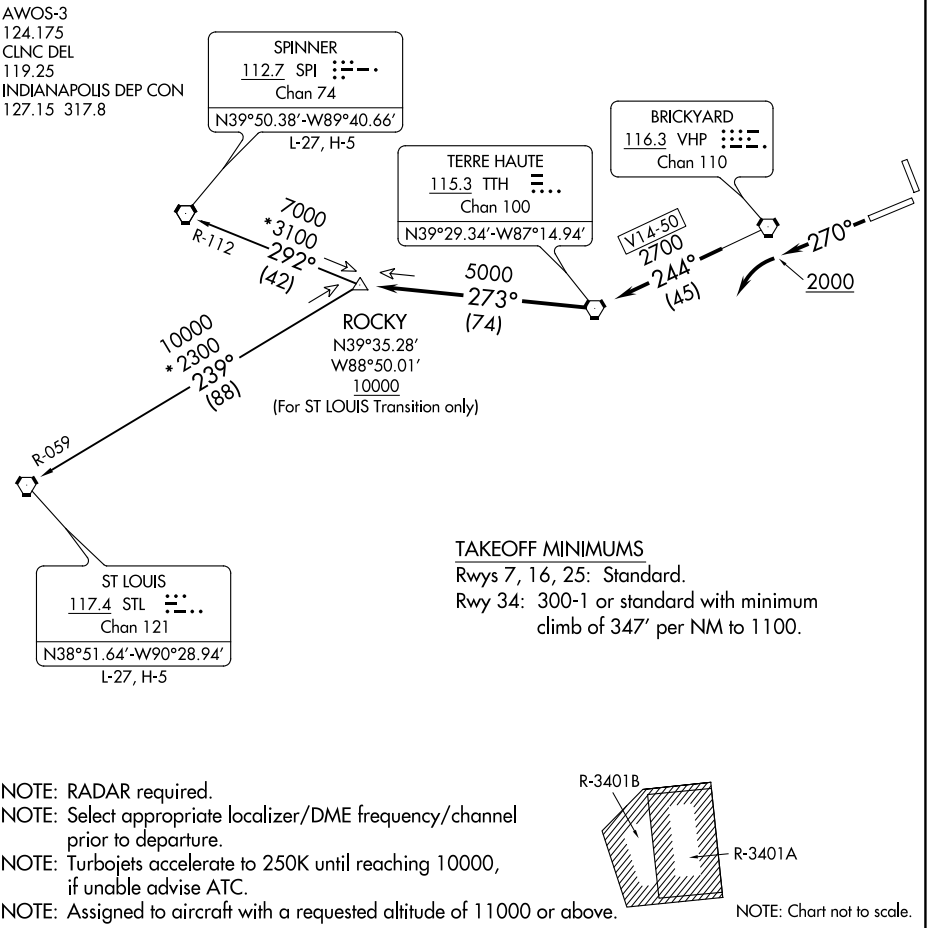


(ROCKY1.ROCKY) 18032
ROCKY ONE DEPARTURE

AL-6452 (FAA)

INDIANAPOLIS RGNL (MQJ)
INDIANAPOLIS, INDIANA



EC-2, 03 DEC 2020 to 31 DEC 2020

EC-2, 03 DEC 2020 to 31 DEC 2020

DEPARTURE ROUTE DESCRIPTION

TAKEOFF RWY 25: Climb heading 270° to 2000 before turning left. Then on assigned heading to assigned altitude. Thence

DEPARTING ALL OTHER AUTHORIZED RUNWAYS: Climb on assigned heading to assigned altitude. Thence

. . . . expect RADAR vectors to join VHP R-244 to TTH VORTAC, then via TTH R-273 to ROCKY INT then via transition or assigned route. Expect clearance to requested altitude ten minutes after departure.

SPINNER TRANSITION (ROCKY1.SPI): From over ROCKY INT on SPI R-112 to SPI VORTAC.
ST LOUIS TRANSITION (ROCKY1.STL): From over ROCKY INT on STL R-059 to STL VORTAC.

ROCKY ONE DEPARTURE
(ROCKY1.ROCKY) 01FEB18

INDIANAPOLIS, INDIANA
INDIANAPOLIS RGNL (MQJ)