

MARYSVILLE, OHIO

AL-6380 (FAA)

19003

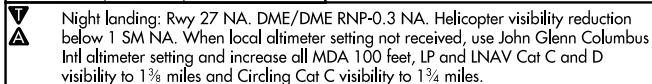
WAAS CH 50327 W27A	APP CRS 268°	Rwy Idg 4095 TDZE 1015 Apt Elev 1021
--	------------------------	---

APP CRS
268°

Rwy Idg	4095
TDZE	1015
Apt Elev	1021

RNAV (GPS) RWY 27

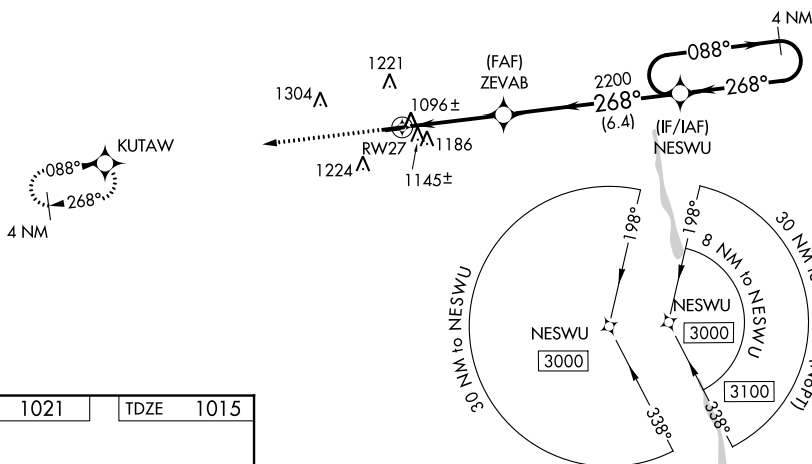
UNION COUNTY (MRT)



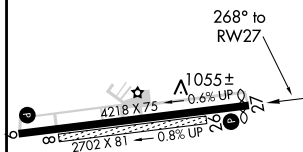
MISSED APPROACH: Climb to 3000 direct KUTAW and hold.

AWOS-3
119.275

COLUMBUS APP CON
125.95 317.775

UNICOM
122.8 (CTAF) **L**

ELEV	1021		TDZE	1015
------	------	--	------	------



3000
↑
KUTAW

VGSI and descent angles not coincident (VGSI Angle 3.00°/TCH 33).

4 NM Holding Pattern

NESWU

088° → 3000
← 268°

ZEVAB

268°

2200

3.7 NM

6.4 NM

CATEGORY	A	B	C	D
LP MDA	1360-1 345 (400-1)			
LNAV MDA	1400-1	385 (400-1)	1400-1 $\frac{1}{8}$	385 (400-1 $\frac{1}{8}$)
CIRCLING	1520-1 499 (500-1)	1540-1 519 (600-1)	1540-1 $\frac{1}{2}$ 519 (600-1 $\frac{1}{2}$)	1580-2 559 (600-2)

MARYSVILLE, OHIO

Orig-B 31MAR16

40°13'N-83°21'W

UNION COUNTY(MRT)

RNAV (GPS) RWY 27

EC-2, 03 DEC 2020 to 31 DEC 2020