

WAAS  
CH **40306**  
**W36A**

APP CRS  
**004°**

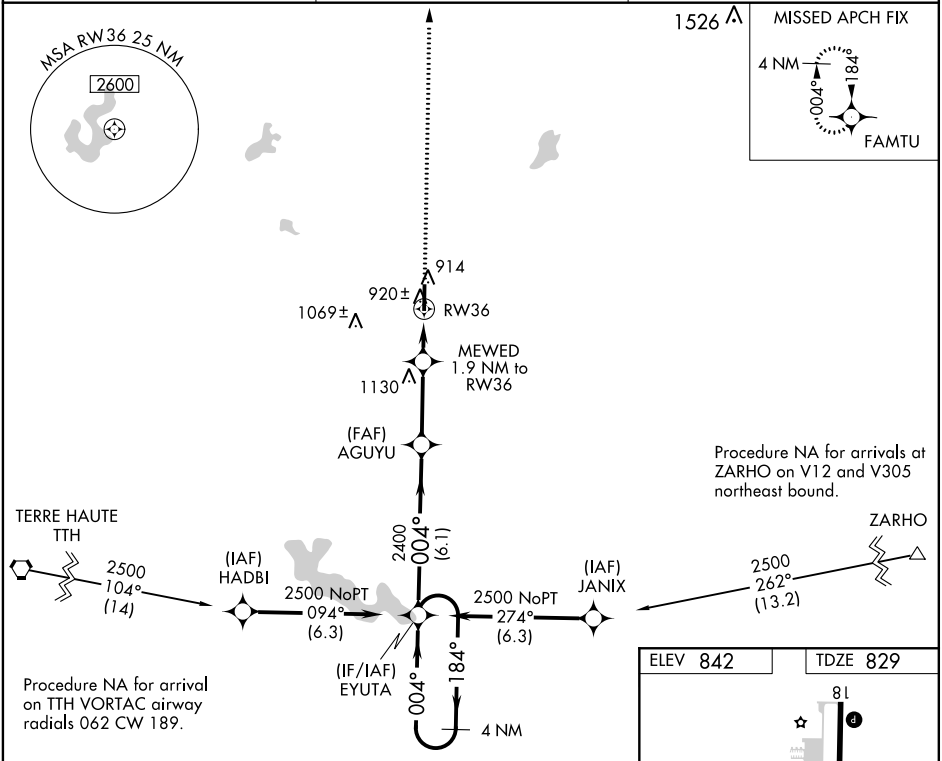
Rwy Idg **5002**  
TDZE **829**  
Apt Elev **842**

**RNAV (GPS) RWY 36**  
PUTNAM COUNTY RGNL (GPC)

**▼** For uncompensated Baro-VNAV systems, LNAV/VNAV NA below -16°C (4°F) or above 54°C (130°F). DME/DME RNP-0.3 NA.

MISSED APPROACH:  
Climb to 2500 direct  
FAMTU and hold.

AWOS-3PT <b>118.125</b>	INDIANAPOLIS APP CON <b>119.05 317.8</b>	UNICOM <b>122.8 (CTAF) 0</b>
----------------------------	---	---------------------------------



4 NM Holding Pattern EYUTA

AGUYU

MEWED 1.9 NM to RW36

\*1.1 NM to RW36

RW36

\*LNAV only.

GP 3.00° TCH 30

2500

184°

004°

004°

2400

\*1440

6.1 NM

3 NM

0.8 NM

1.1 NM

2500

FAMTU

81

5002 X 100

0.6% Up

36

004° to RW36

MIRL Rwy 18-36 0

REIL Rwy 18

CATEGORY	A	B	C	D
LPV DA	1079-7/8		250 (300-7/8)	
LNAV/VNAV DA	1116-1		287 (300-1)	
LNAV MDA	1180-1		351 (400-1)	
CIRCLING	1280-1 438 (500-1)	1400-1 558 (600-1)	1480-1 3/4 638 (700-1 3/4)	1480-2 638 (700-2)