

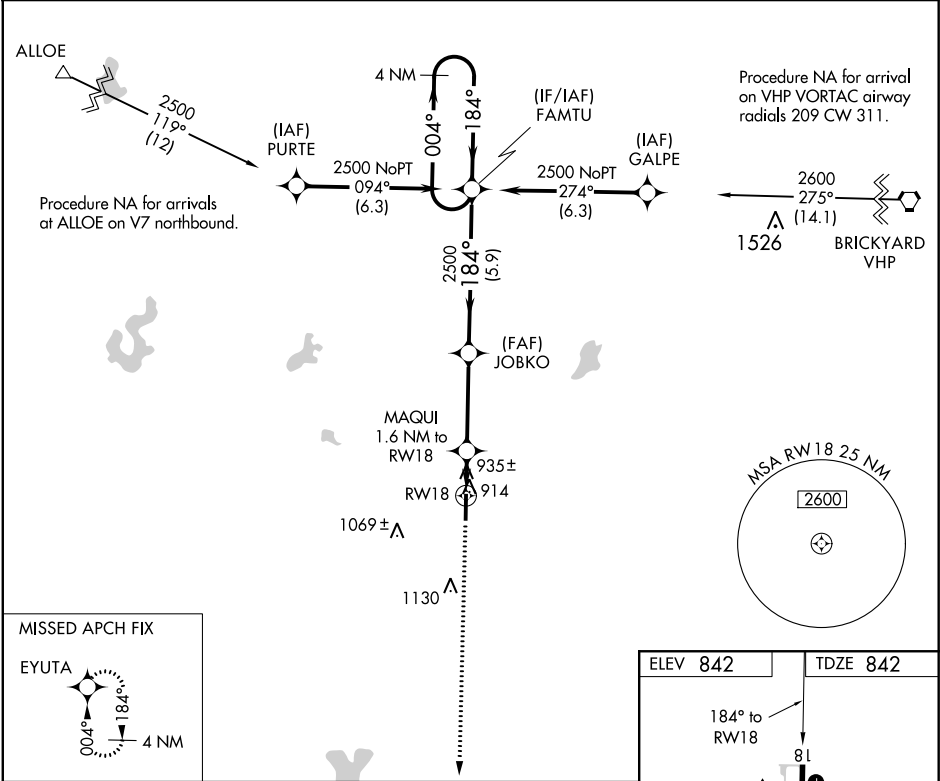
WAAS CH <b>86906</b> <b>W18A</b>	APP CRS <b>184°</b>	Rwy Idg <b>5002</b> TDZE <b>842</b> Apt Elev <b>842</b>
--	------------------------	---

RNAV (GPS) RWY 18

PUTNAM COUNTY RGNL (GPC)

<div><div></div><div>For uncompensated Baro-VNAV systems, LNAV/VNAV NA below -1.6°C (4°F) or above 54°C (130°F). Rwy 18 helicopter visibility reduction below ¾ SM NA. DME/DME RNP-0.3 NA.</div></div>	MISSED APPROACH: Climb to 2500 direct EYUTA and hold.
--	--

AWOS-3PT <b>118.125</b>	INDIANAPOLIS APP CON <b>119.05 317.8</b>	UNICOM <b>122.8 (CTAF) 0</b>
----------------------------	---	---------------------------------



2500	EYUTA	*LNAV only.	JOBKO	FAMTU	4 NM Holding Pattern
2500	MAQUI 1.6 NM to RW18	2500	184°	004°	2500
	*1 NM to RW18	1380*	184°	GP 3.00° TCH 30	
1 NM	0.6 NM	3.5 NM	5.9 NM		
CATEGORY	A	B	C	D	
LPV DA	1107-7/8	265 (300-7/8)			
LNAV/VNAV DA	1106-7/8	264 (300-7/8)			
LNAV MDA	1200-1	358 (400-1)			
CIRCLING	1280-1 438 (500-1)	1400-1 558 (600-1)	1480-1¾ 638 (700-1¾)	1480-2 638 (700-2)	MIRL Rwy 18-36 0 REIL Rwy 18