

VORTAC FBC

108.2

Chan **19**

APP CRS

298°

Rwy Idg

4477

TDZE

763

Apt Elev

763

VOR RWY 27

PUTNAM COUNTY (OWX)

RADAR or DME required.

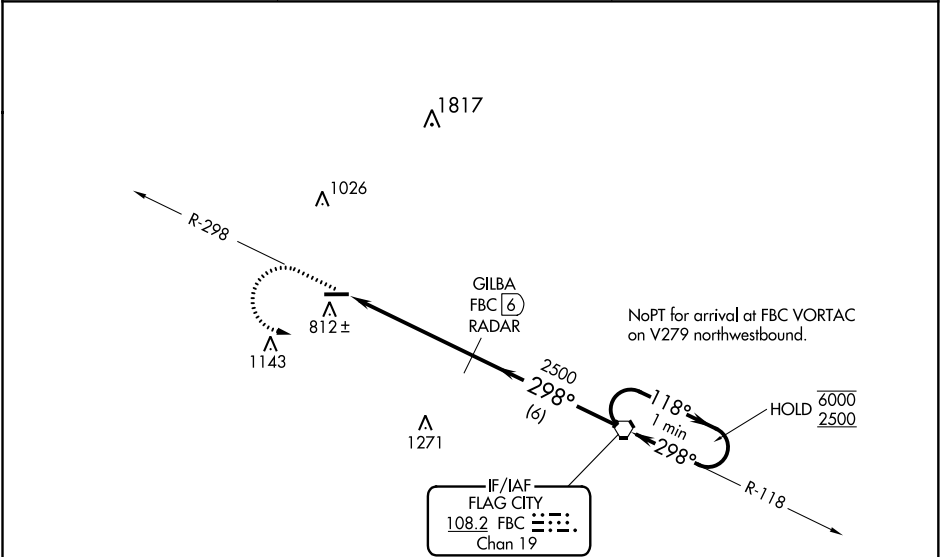
▼

NA

Rwy 27 helicopter visibility reduction below 1 SM NA.
Straight-in, Circling Rwy 27 NA at night.

MISSED APPROACH: Climb to 2500 on FBC VORTAC
R-298 then left turn direct FBC VORTAC and hold.

AWOS-3 120.525	TOLEDO APP COM 120.8 317.55	UNICOM 122.7 (CTAF) 0
--------------------------	---------------------------------------	---------------------------------



ELEV **763**

TDZE **763**

4504 X 75

799±

27

298° 5 NM from FAF

REIL Rwys 9 and 27 0

MIRL Rwy 9-27 0

FAF to MAP 5 NM

Knots	60	90	120	150	180
Min:Sec	5:00	3:20	2:30	2:00	1:40

2500

FBC R-298

FBC (11)

GILBA FBC (6) RADAR

FBC VORTAC

One Minute Holding Pattern

2500

298°

118°

6000

2500

5 NM

6 NM

CATEGORY	A	B	C	D
S-27	1220-1	457 (500-1)	NA	
CIRCLING	1220-1	457 (500-1)	NA	

EC-2, 03 DEC 2020 to 31 DEC 2020

EC-2, 03 DEC 2020 to 31 DEC 2020