

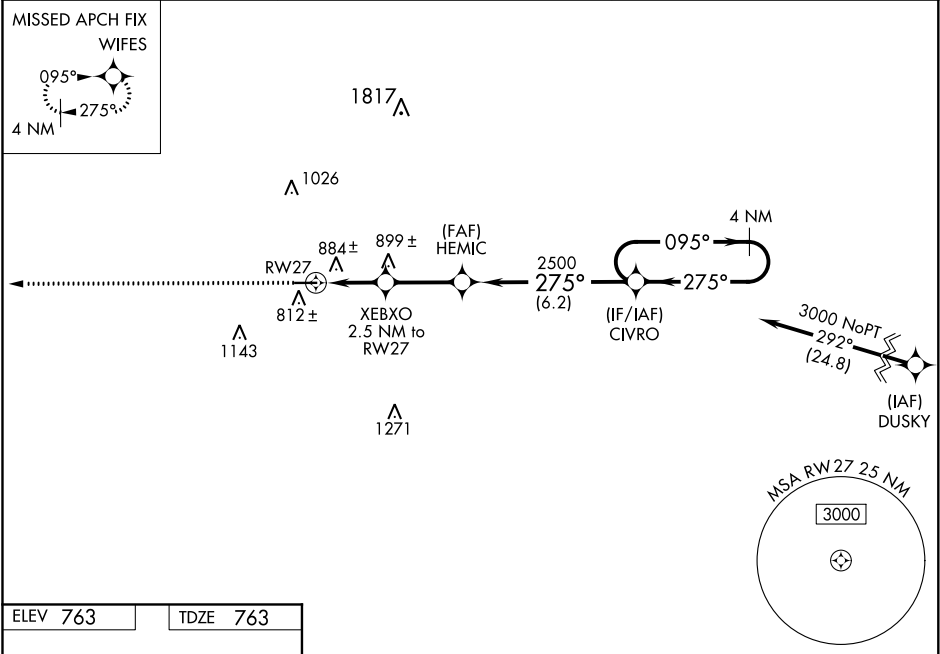
WAAS CH <b>97614</b> <b>W27A</b>	APP CRS <b>275°</b>	Rwy Idg TDZE Apt Elev	<b>4477</b> <b>763</b> <b>763</b>
--	------------------------	-----------------------------	---

RNAV (GPS) RWY 27


PUTNAM COUNTY (OWX)

RNP APCH.	For uncompensated Baro-VNAV systems, LNAV/VNAV NA below -16°C or above 54°C . Baro-VNAV and VDP NA when using Findlay alimeter setting. Rwy 27 helicopter visibility reduction below ¾ SM NA. When local alimeter setting not received, use Findlay alimeter setting and increase all DAs/MDAs 40 feet.	MISSED APPROACH: Climb to 3000 direct WIFES and hold.
-----------	---	--

AWOS-3 <b>120.525</b>	TOLEDO APP CON <b>120.8 317.55</b>	UNICOM <b>122.7 (CTAF) 0</b>
--------------------------	---------------------------------------	---------------------------------



ELEV <b>763</b>	TDZE <b>763</b>
-----------------	-----------------

	3000 WIFES	4 NM Holding Pattern			
	*LNAV only.	XEBXO 2.5 NM to RW27	HEMIC	CIVRO	GP 3.00° TCH 44
	*1 NM to RW27	1600*	2500	3000	
	1.0	1.5 NM	2.7 NM	6.2 NM	
	CATEGORY	A	B	C	D
LPV DA	1048-1	285 (300-1)		NA	
LNAV/VNAV DA	1185-1½	422 (500-1½)		NA	
LNAV MDA	1140-1	377 (400-1)		NA	
CIRCLING	1200-1 437 (500-1)	1220-1 457 (500-1)		NA	