

APP CRS
229°

Rwy Idg
TDZE
896

Apt Elev
896

RNAV (GPS) RWY 23

ALEXANDER SALAMON (A.M.T.)

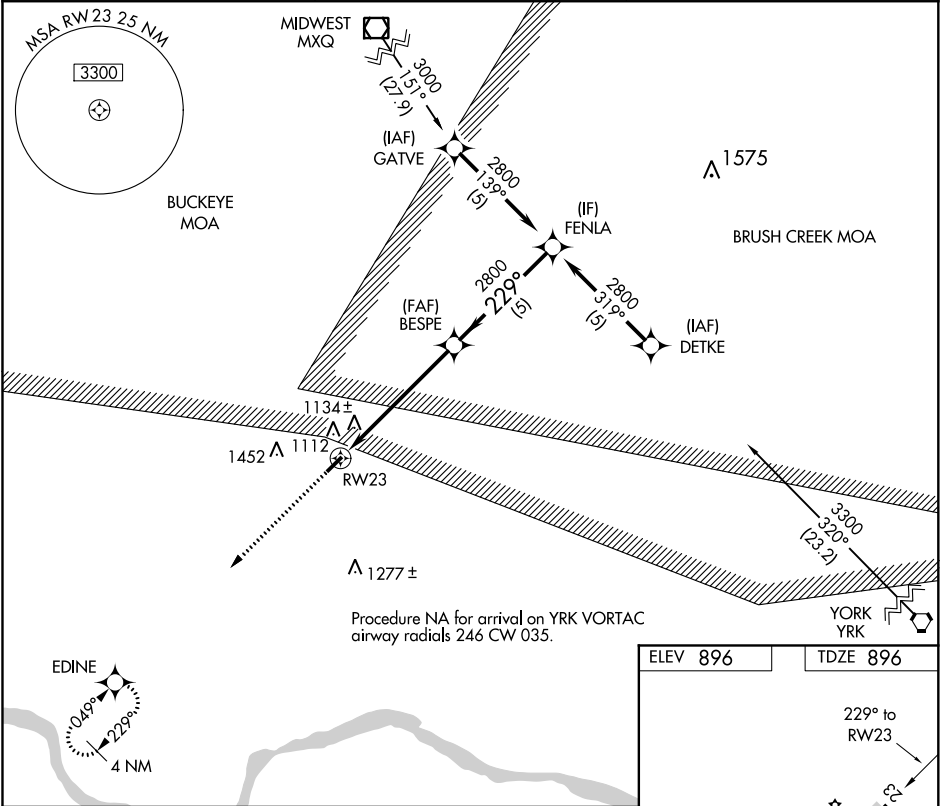
RNP APCH.

Procedure NA at night. Rwy 23 helicopter visibility reduction below 1 SM NA.

Use Flemingsburg, Kentucky altimeter setting.

MISSED APPROACH: Climb to 2800 direct EDINE and hold.

FGX AWOS-3 118.125	INDIANAPOLIS CENTER 135.575 290.5	UNICOM 122.8 (CTAF) 0
------------------------------	---	---------------------------------



EDINE

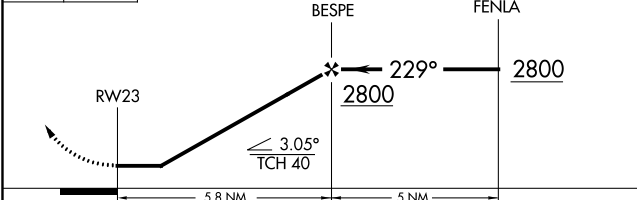
2800

EDINE

229°

4 NM

VGSI and descent angles not coincident
(VGSI Angle 3.30/TCH 25).



CATEGORY	A	B	C	D
LNAV MDA	1440-1	544 (600-1)	1440-1½ 544 (600-1½)	NA

ELEV 896

TDZE 896

229° to RWY 23

3558 x 65

0.3% UP

REIL Rwy 5 and 23 0

MIRL Rwy 5-23 0