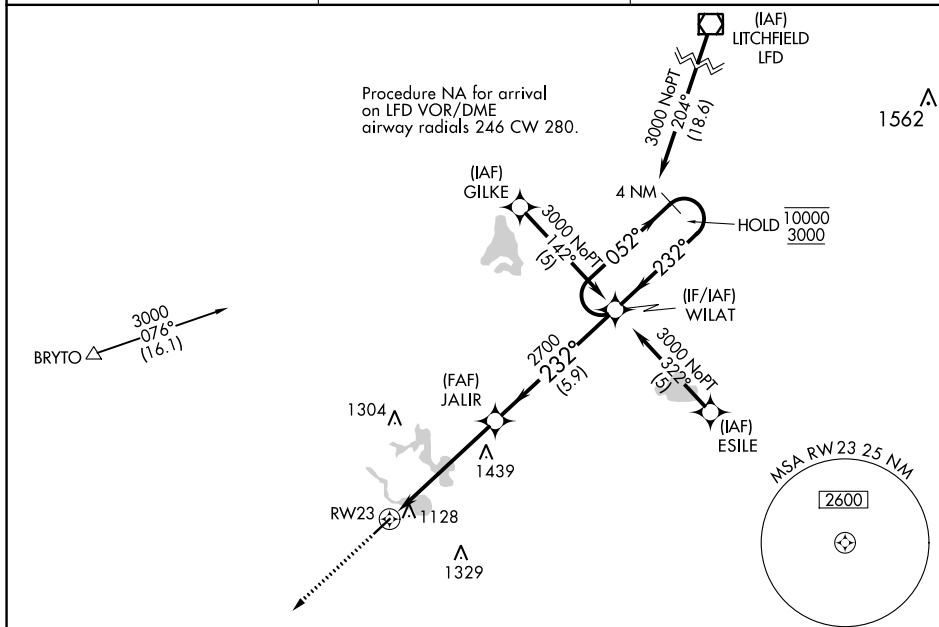


RNAV (GPS) RWY 23
TRI-STATE STEUBEN COUNTY (ANQ)

Rwy 23 helicopter visibility reduction below 1 SM NA.
Procedure NA at night.

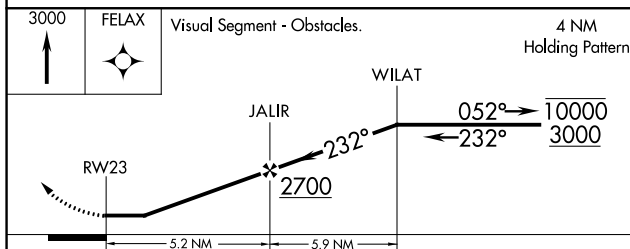
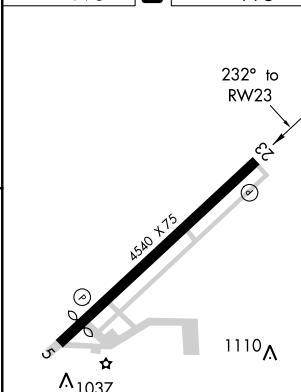
MISSED APPROACH: Climb to 3000
direct FELAX and hold.

FORT WAYNE APP CON
127.2 284.6 (SW/NW)
132.15 284.6 (SE/NE)

UNICOM
123.075 (CTAF) **L**

EC-2, 03 DEC 2020 to 31 DEC 2020

ELEV	995	D	TDZE	995
------	-----	----------	------	-----



CATEGORY	A	B	C	D
LNAV MDA	1700-1	705 (800-1)	1700-2 705 (800-2)	NA

REIL Rwy 5 and 23 (L)
MIRL Rwy 5-23 (L)