

WAAS  
CH **82327**  
**W36A**

APP CRS  
**002°**

Rwy Idg  
TDZE **681**  
Apt Elev **698**

**RNAV (GPS) RWY 36**

JASPER COUNTY (RZL)

RNP APCH.

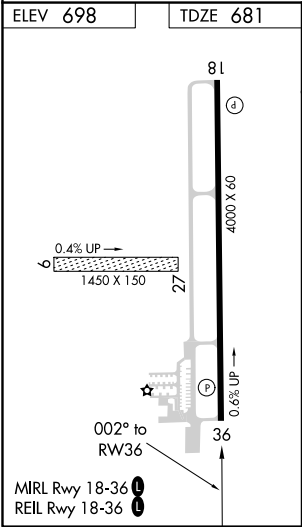
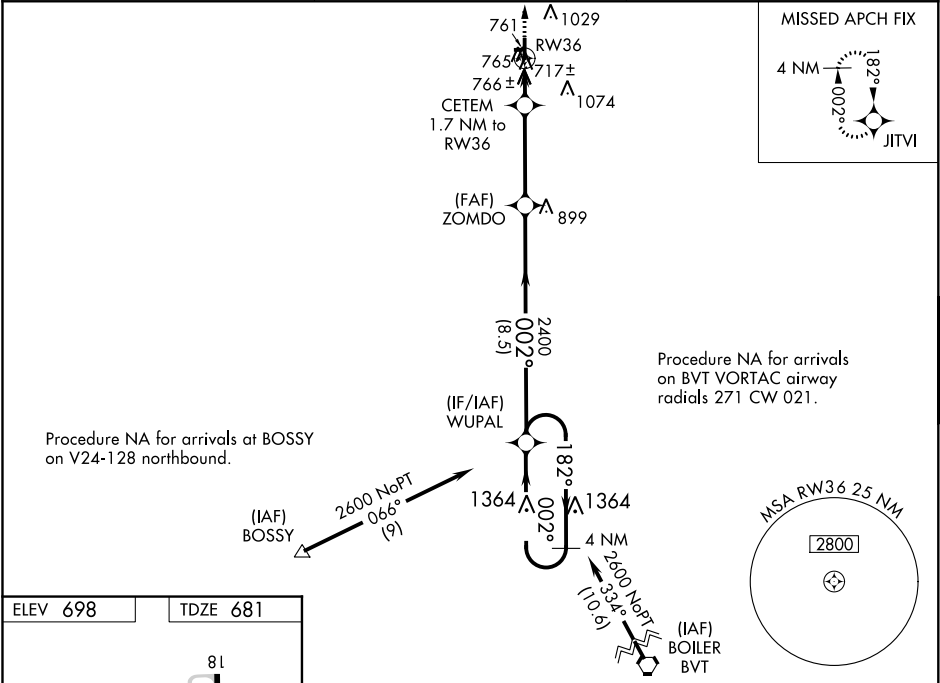
Baro-VNAV NA when using Knox altimeter setting. For uncompensated Baro-VNAV systems, LNAV/VNAV NA below -22°C or above 54°C. When local altimeter setting not received use Knox altimeter setting and increase all DA 78 feet and all MDA 80 feet, increase LPV and LNAV/VNAV all Cats visibility ⅓ mile and LNAV and Circling Cat C visibility ¼ mile. Rwy 36 helicopter visibility reduction below 1 SM NA. Circling NA to Rwy 9 and 27.

MISSED APPROACH:  
Climb to 2600 direct  
JITVI and hold.

AWOS-3P  
**119.175**

CHICAGO CENTER  
**132.5 284.7**

UNICOM  
**122.8 (CTAF) 0**



2600 ↑ JITVI		WUPAL 4 NM Holding Pattern		
* LNAV only. CETEM 1.7 NM to RW36		ZOMDO 2400		
RW36 1.7 NM		182° 002° 2600		
*1240		GP 3.00° TCH 40		
-1.7		8.5 NM		
A		B	C	D
LPV DA	931-1 250 (300-1)			NA
LNAV/ DA	947-1 266 (300-1)			NA
LNAV MDA	1020-1 339 (400-1)			NA
CIRCLING	1120-1 422 (500-1)	1340-1 642 (700-1)	1340-1¾ 642 (700-1¾)	NA