

VOR XUB
112.5

APP CRS
204°

Rwy Idg 5405
TDZE 716
Apt Elev 725

VOR RWY 23
ROSS COUNTY (R/ZT)

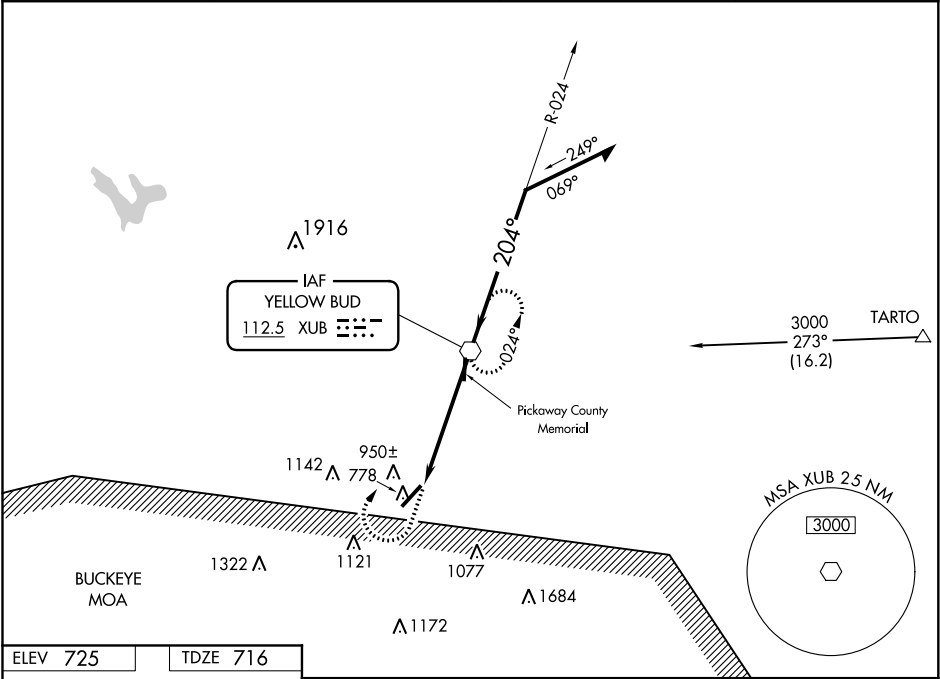
▼

NA

When local altimeter setting not received, use Rickenbacker Intl altimeter setting. When VGSI is inop, Straight-in and Circling Rwy 23 procedures NA at night.

MISSED APPROACH: Climb to 3000 then right turn direct XUB VOR and hold.

AWOS-3 119.225	COLUMBUS APP CON 134.0 279.6	UNICOM 122.8 (CTAF)	123.0
-------------------	---------------------------------	------------------------	-------



ELEV 725 TDZE 716

204° 5.2 NM from FAF

5405 x 100

0.4% UP

REIL Rwy 5 and 23
MIRL Rwy 5-23

FAF to MAP 5.2 NM					
Knots	60	90	120	150	180
Min:Sec	5:12	3:28	2:36	2:05	1:44

3000

XUB

XUB VOR

Remain within 10 NM

024°

204°

3000

2300

≤ 2.82° TCH 45

5.2 NM

CATEGORY	A	B	C	D
S-23	1220-1	504 (500-1)	1220-1½	504 (500-1½)
CIRCLING	1340-1 615 (700-1)	1360-1 635 (700-1)	1380-1¾ 655 (700-1¾)	1400-2¼ 675 (700-2¼)
RICKENBACKER INTL ALTIMETER SETTING MINIMUMS				
S-23	1280-1	564 (600-1)	1280-1⅝	564 (600-1⅝)
CIRCLING	1400-1 675 (700-1)	1420-1 695 (700-1)	1440-2 715 (800-2)	1460-2¼ 735 (800-2¼)