

WAAS CH 70713 W05A	APP CRS 050°	Rwy Idg 5002 TDZE 757 Apt Elev 757
----------------------------------------	------------------------	---------------------------------------------------------------

RNAV (GPS) RWY 5

NORTH VERNON (OVO)

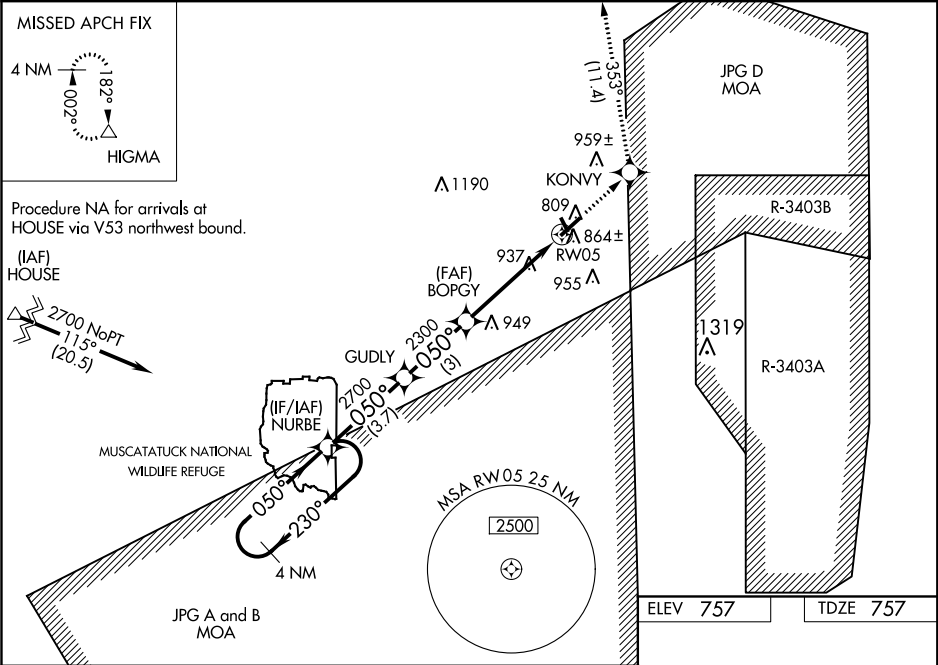
▼

NA

For uncompensated Baro-VNAV systems, LNAV/VNAV NA below -16°C (4°F) or above 54°C (130°F). DME/DME RNP-0.3 NA. When local altimeter setting not received, use Shelbyville altimeter setting and increase all DA 84 feet, all MDA 100 feet. Increase LPV all Cats visibility 1/8 mile, LNAV/VNAV all Cats visibility 1/4 mile, LNAV Cat C visibility 1/4 mile and Circling Cat C 1/8 mile. VDP and Baro-VNAV NA when using Shelbyville altimeter setting. Helicopter visibility reduction below 3/4 SM NA.

MISSED APPROACH:
Climb to 2800 direct KONVY and on track 353° to HIGMA and hold.

AWOS-3 120.625	INDIANAPOLIS CENTER 124.775 269.45	UNICOM 122.7 (CTAF) ①
--------------------------	----------------------------------------------	---------------------------------



VGSI and RNAV glidepath not coincident (VGSI Angle 3.00/TCH 34).				
4 NM Holding Pattern	NURBE	GUDLY	KONVY	HIGMA
2700	2700	2300	2800	tr 353°
GP 3.00° TCH 40				
	3.7 NM	3 NM	3.4 NM	1.3 NM
CATEGORY	A	B	C	D
LPV DA	1091-1¼	334 (400-1¼)		NA
LNAV/VNAV DA	1116-1¼	359 (400-1¼)		NA
LNAV MDA	1200-1	443 (500-1)	1200-13/8 443 (500-13/8)	NA
CIRCLING	1200-1 443 (500-1)	1220-1 463 (500-1)	1220-1½ 463 (500-1½)	NA

MIRL Rwy 5-23 ①

MIRL Rwy 15-33