

NDB UWL

385

APP CRS

087°

Rwy Idg

4201

TDZE

1089

Apt Elev

1090

NDB RWY 10

NEW CASTLE HENRY COUNTY MARLATT FIELD (UWL)

RADAR required for procedure entry.

▼

NA

Rwy 10 helicopter visibility reduction below ¾ SM NA. Use Anderson altimeter setting; when not recieved, use Muncie altimeter setting and increase all MDA 20 feet; increase S-10 Cat C/D visibility ½ SM.

MISSED APPROACH: Climb to 2700 then right turn direct UWL NDB and hold.

AID AWOS-3

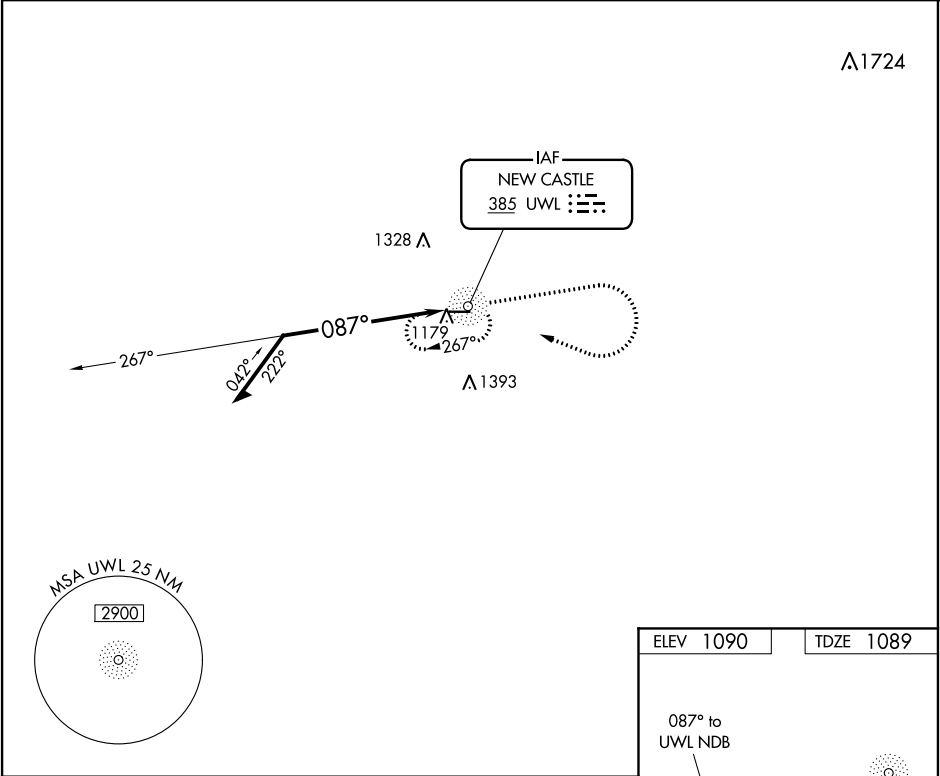
128.55

INDIANAPOLIS APP CON

135.45 317.8

UNICOM

123.05 (CTAF) 0



Remain within 10 NM

UWL NDB

2700

267°

087°

2700

UWL

ELEV 1090

TDZE 1089

087° to UWL NDB

10

4201 X 75

28

CATEGORY	A	B	C	D
S-10	1760-1	671 (700-1)	1760-1⅞	671 (700-1⅞)
CIRCLING	1760-1	670 (700-1)	1780-2 690 (700-2)	1780-2¼ 690 (700-2¼)

MIRL Rwy 10-28 0  
REIL Rwy 10 and 28 0

EC-2, 03 DEC 2020 to 31 DEC 2020

EC-2, 03 DEC 2020 to 31 DEC 2020