

WAAS CH 77642 W09A	APP CRS 092°	Rwy Idg 4802 TDZE 1007 Apt Elev 1007
--	------------------------	---

RNAV (GPS) RWY 9

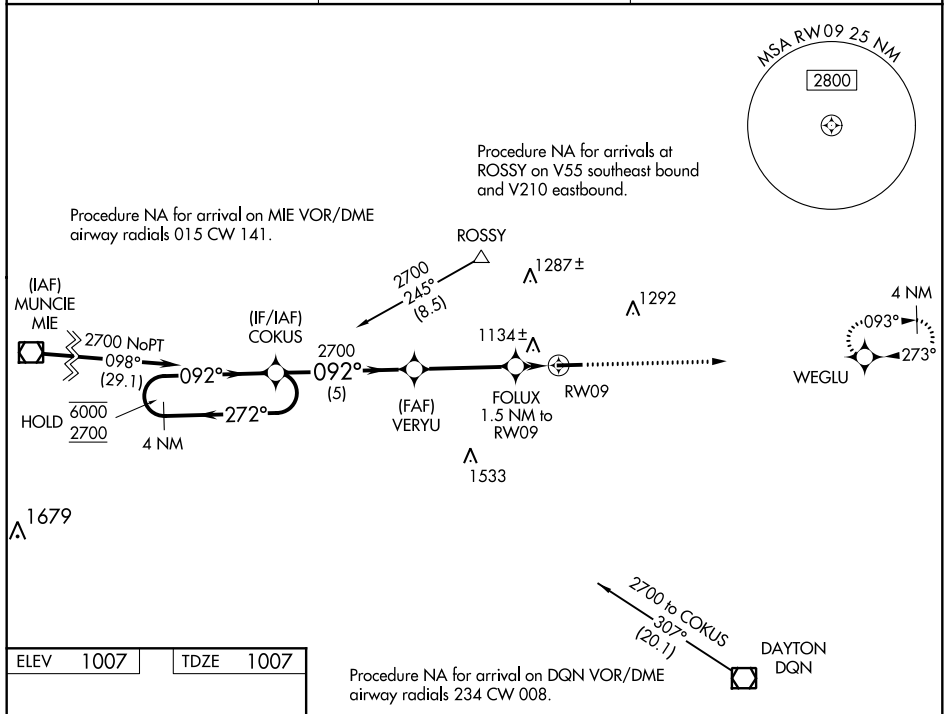
DARKE COUNTY (VES)

RNP APCH.

T Circling Rwy 27 NA at night. Rwy 9 helicopter visibility reduction below $\frac{3}{4}$ SM NA.
For uncompensated Baro-VNAV systems, LNAV/VNAV NA below -16°C or above 54°C .

MISSED APPROACH:
Climb to 2700 direct
WEGLU and hold.

AWOS-3 125.9	COLUMBUS APP CON 118.425 352.05	UNICOM 122.8 (CTAF) 0
------------------------	---	---------------------------------



ELEV	1007	TDZE	1007
------	------	------	------

