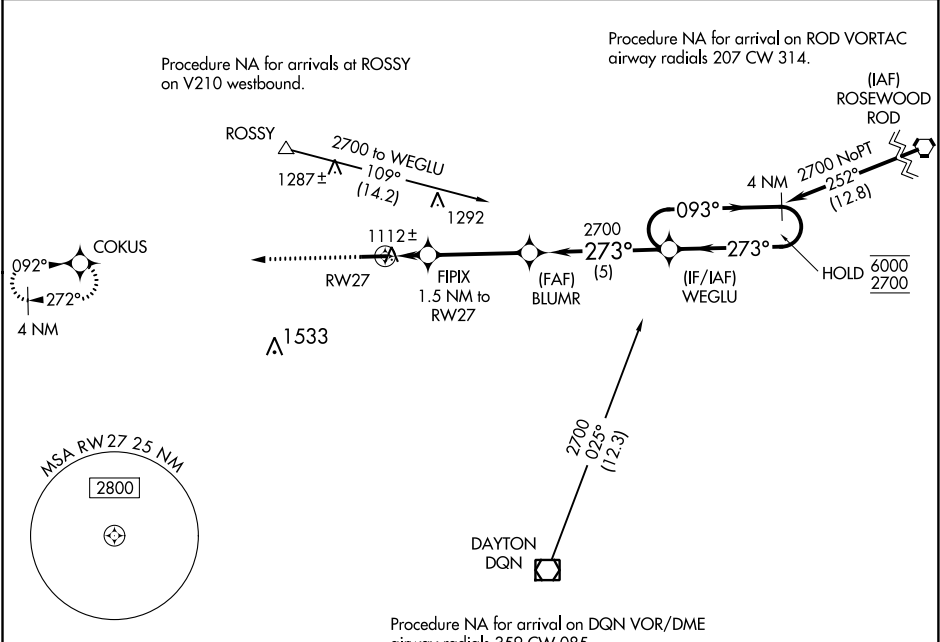


WAAS CH 86243 W27A	APP CRS 273°	Rwy Idg 4802 TDZE 1007 Apt Elev 1007
--	------------------------	---

RNAV (GPS) RWY 27

DARKE COUNTY (VES)

RNP APCH.		MISSED APPROACH: Climb to 2700 direct COKUS and hold.
▼ Rwy 27 helicopter visibility reduction below 1 SM NA. Straight-in Rwy 27 NA at night, Circling Rwy 27 NA at night.		
AWOS-3 125.9	COLUMBUS APP CON 118.425 352.05	UNICOM 122.8 (CTAF) 0



ELEV 1007	TDZE 1007
-----------	-----------

