

APP CRS	Rwy Idg	4000
094°	TDZE	784
	Apt Elev	785

RNAV (GPS) RWY 9

VAN WERT COUNTY (VNW)

T
A

DME/DME RNP-0.3 NA. When local altimeter setting not received, use Fort Wayne altimeter setting and increase all MDA 80 feet and increase LNAV Cat C and D visibility $\frac{1}{4}$ mile and Circling Cat C visibility $\frac{1}{4}$ mile. VDP NA when using Fort Wayne altimeter setting.

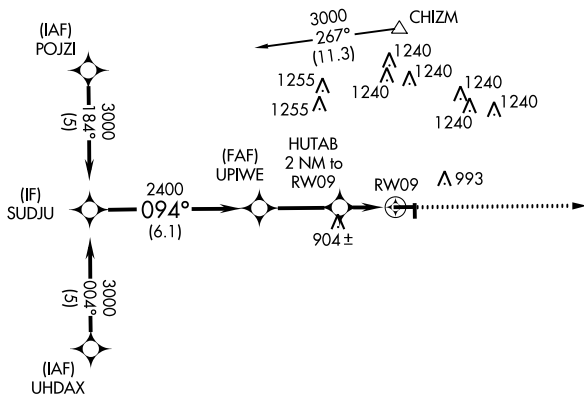
MISSED APPROACH: Climb to 3000
direct **DRIF** and hold.

AWOS-3
125.175

FORT WAYNE APP CON
127.2 284.6

UNICOM
123.0 (CTAF)

Procedure NA for arrivals at
CHIZM via V38 eastbound.



Procedure NA for arrivals at BOOKS via V55 southeast bound

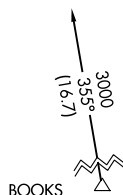
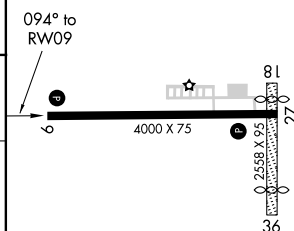


Diagram illustrating a flight path segment. The path starts at a point labeled 'SUDJU' with an altitude of 3000. It proceeds to a point labeled 'UPIWE' with an altitude of 2400. From 'UPIWE', the path continues to a point labeled 'RW09' with an altitude of 1460. The distance from 'UPIWE' to 'RW09' is 1.1 NM. The distance from 'HUTAB' (2 NM to RW09) to 'RW09' is 1.1 NM. The angle between the path segments is 094°. The angle between the path segment and the horizontal is 3.04°. The angle between the path segment and the vertical is 3.00/TCH 38. A diagram shows a compass rose and a drift indicator.

CATEGORY	A	B	C	D
LNAV MDA	1160-1 376 (400-1)			1160-1¼ 376 (400-1¼)
CIRCLING	1340-1 555 (600-1)		1340-1½ 555 (600-1½)	1340-2 555 (600-2)

ELEV	785		TDZE	784
------	-----	--	------	-----



MIRL Rwy 9-27 **L**
REIL Rwy 9 and 27 **L**