

WAAS CH <b>87038</b> <b>W19A</b>	APP CRS <b>188°</b>	Rwy Idg <b>4346</b> TDZE <b>685</b> Apt Elev <b>685</b>
--	------------------------	---

# RNAV (GPS) RWY 19

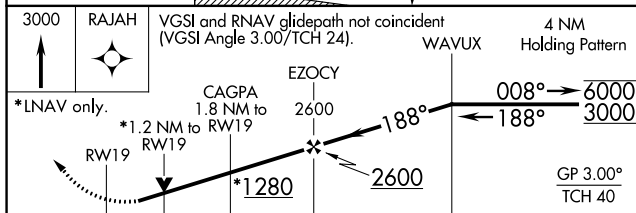
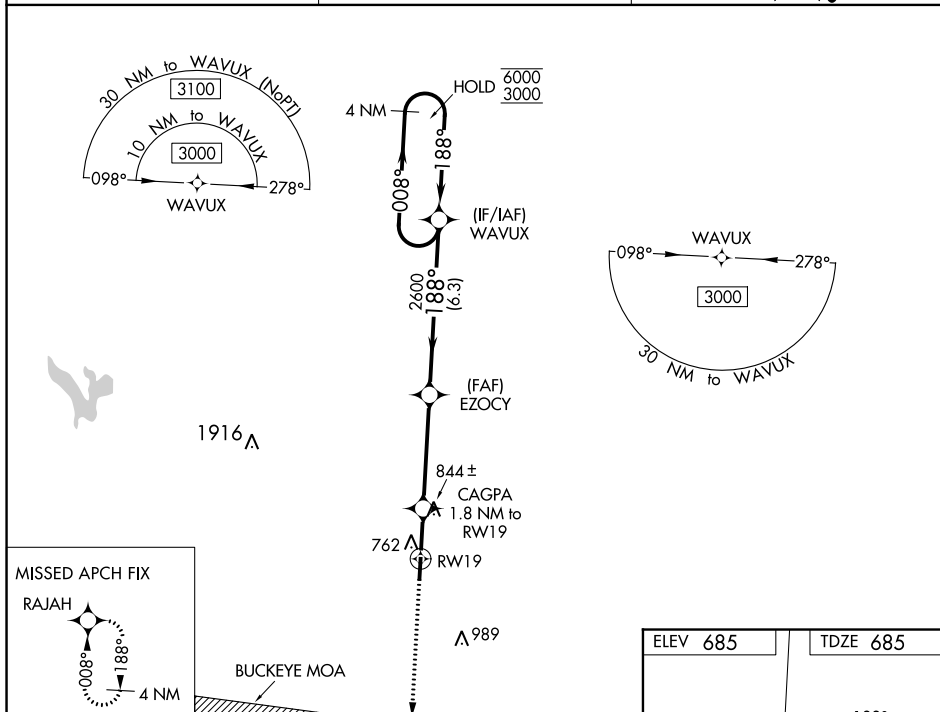
## PICKAWAY COUNTY MEMORIAL (CYO)


RNP APCH.

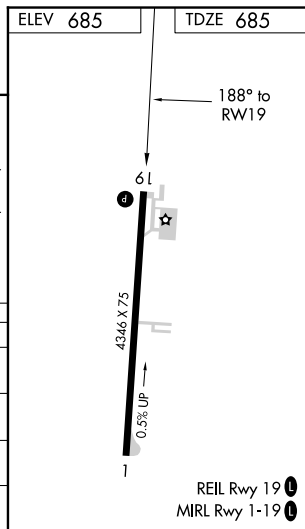
**⚠** Baro-VNAV and VDP NA when using Rickenbacker Intl altimeter setting. For uncompensated Baro-VNAV systems, UNAV/VNAV NA below -18°C or above 54°C. Use Chillythe altimeter setting, when not received use Rickenbacker Intl altimeter setting and increase LPV DA to 985 feet, LNAV/VNAV DA to 1150 feet, and all visibilities ¼ SM. Increase all MDAs 60 feet and Cats C and D visibility ¼ SM. Circling Rwy 1 NA at night. Rwy 19 helicopter visibility reduction below ¾ SM NA.

**MISSED APPROACH:**  
Climb to 3000 direct  
RAJAH and hold.

RZT AWOS-3 <b>119.225</b>	COLUMBUS APP CON <b>134.0 279.6</b>	UNICOM <b>122.7 (CTAF) 0</b>
------------------------------	--	---------------------------------



CATEGORY		A	B	C	D
LPV	DA	935- $\frac{7}{8}$		250 (300- $\frac{7}{8}$ )	
LNAV/ VNAV	DA	1100-1 $\frac{3}{8}$		415 (500-1 $\frac{3}{8}$ )	
LNAV	MDA	1100-1	415 (500-1)	1100-1 $\frac{1}{8}$	415 (500-1 $\frac{1}{8}$ )
 CIRCLING		1180-1 495 (500-1)	1200-1 515 (600-1)	1300-1 $\frac{3}{4}$ 615 (700-1 $\frac{3}{4}$ )	1340-2 655 (700-2)



# PICKAWAY COUNTY MEMORIAL (CYO) RNAV (GPS) RWY 19