

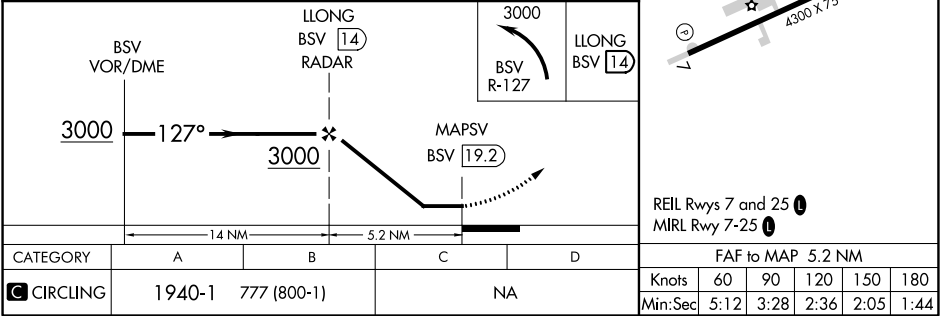
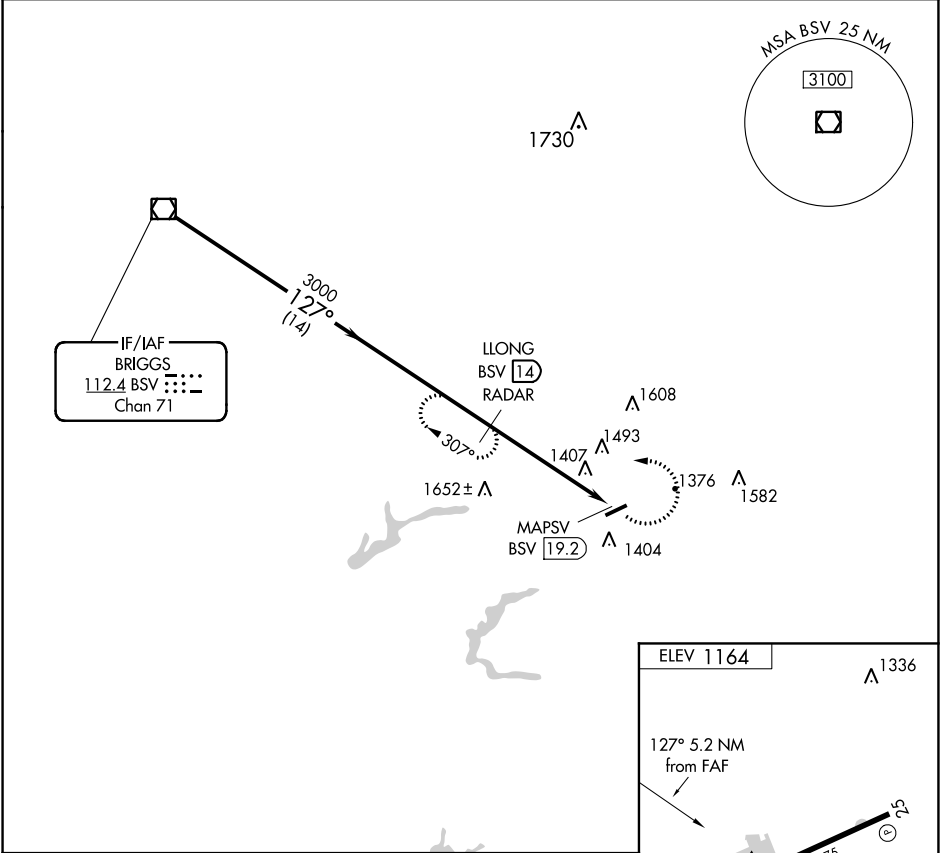
|   |                        |   |   |
|---|------------------------|---|---|
| VOR/DME BSV<br><b>112.4</b><br>Chan <b>71</b> | APP CRS<br><b>127°</b> | Rwy Idg<br>TDZE<br>Apt Elev <b>1164</b> | <b>N/A</b><br><b>N/A</b><br><b>1164</b> |
|---|------------------------|---|---|

VOR-A

CARROLL COUNTY-TOLSON (TSO)

|  |  |
|--|--|
| DME or RADAR required.   | MISSED APPROACH: Climbing left turn to 3000 on BSV VOR/DME R-127 to LLONG/BSV 14 DME/RADAR and hold. |
| Procedure NA at night. Use Akron-Canton altimeter setting; when not received, use New Philadelphia altimeter setting and increase MDA 20 feet. |  |

|  |                                 |
|--|---------------------------------|
| CLEVELAND APP CON★<br><b>125.5 371.875</b> | UNICOM<br><b>122.7 (CTAF) 0</b> |
|--|---------------------------------|



EC-2, 03 DEC 2020 to 31 DEC 2020

EC-2, 03 DEC 2020 to 31 DEC 2020