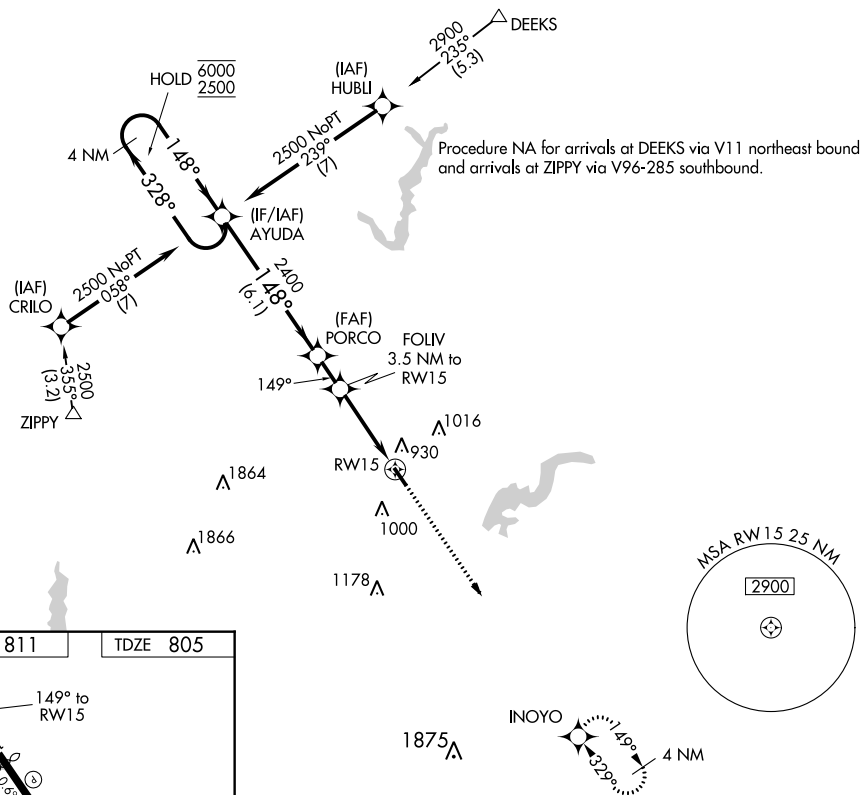


RNAV (GPS) RWY 15
INDIANAPOLIS METROPOLITAN (UMP)

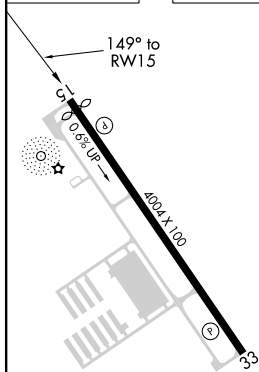
NA Helicopter visibility reduction below $\frac{3}{4}$ SM NA. VDP NA when using Indianapolis Intl altimeter setting. When local altimeter setting not received, use Indianapolis Intl altimeter setting and increase all MDA 60 feet and LNAV Cat C visibility $\frac{1}{4}$ SM.

MISSED APPROACH:
Climb to 2900 direct
INOYO and hold.

AWOS-3 119.375	INDIANAPOLIS APP CON 127.15 317.8	CLNC DEL 121.625	UNICOM 123.0 (CTAF) 0
--------------------------	---	----------------------------	---------------------------------



ELEV 811		TDZE 805
----------	--	----------



REIL Rwy 15 and 33 L

Amdt 2 15AUG19

39°56'N-86°03'W

INDIANAPOLIS METROPOLITAN (UMP)
RNAV (GPS) RWY 15