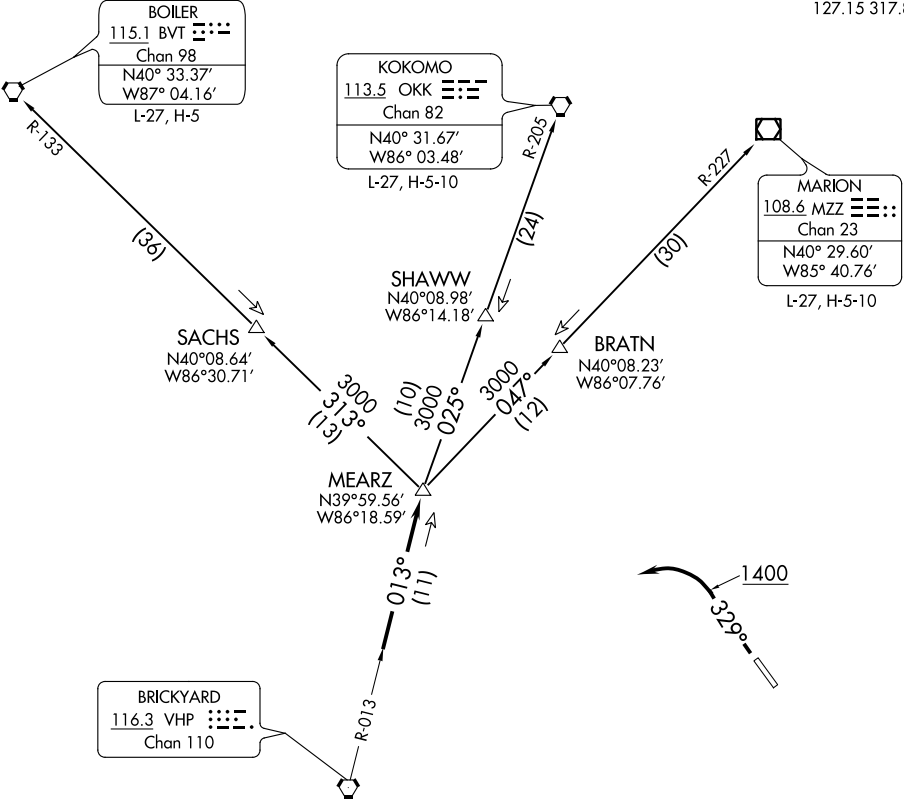


TOP ALTITUDE:
ASSIGNED BY ATC

AWOS-3
119.375
CLNC DEL
121.625
INDIANAPOLIS DEP CON
127.15 317.8

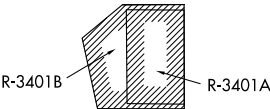


TAKEOFF MINIMUMS

Rwy 15: NA-Obstacles.
Rwy 33: Standard.

- NOTE: RADAR required.
- NOTE: Select appropriate localizer/DME frequency/channel prior to departure.
- NOTE: Turbojets accelerate to 250K until reaching 10000, if unable advise ATC.
- NOTE: Assigned to aircraft with a requested altitude of 11000 or above.

(NARRATIVE ON FOLLOWING PAGE)



NOTE: Chart not to scale.