

VOR/DME DJB 113.6 Chan 83	APP CRS 070°	Rwy Idg TDZE Apt Elev	N/A N/A 793
---	------------------------	-----------------------------	--

VOR-A
LORAIN COUNTY RGNL (LPR)

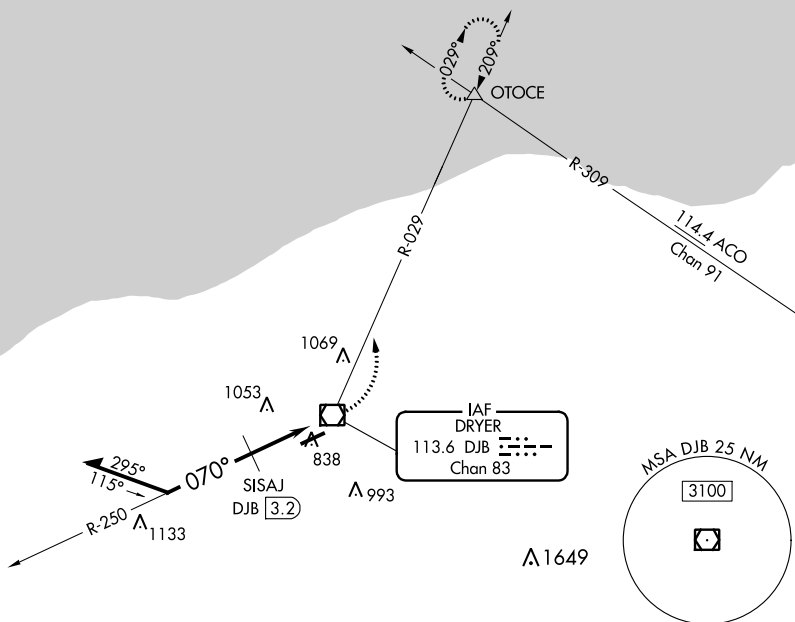
T When local altimeter setting not received, use Cleveland-Hopkins Intl altimeter setting and increase all MDA 40 feet, increase circling Cat C/D visibility $\frac{1}{4}$ mile.

MISSED APPROACH: Climbing left turn to 3000 via heading 029° and DJB VOR/DME R-029 direct OTOCE INT and hold.

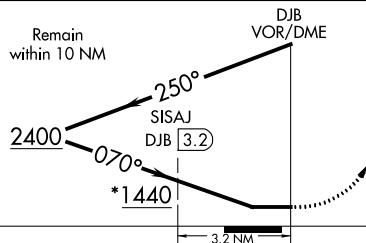
ASOS
121,425

CLEVELAND APP CON
126.35 346.325

CLNC DEL
125.7

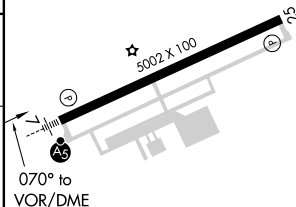
UNICOM
122.7 (CTAF) **L**



ELEV 793



3000 hdg	DJB R-029	OTOCE △
-------------	--------------	------------

* 1480 when using Cleveland-Hopkins altimeter setting.



CATEGORY	A	B	C	D
 CIRCLING	1440-1 647 (700-1)	1440-1 $\frac{3}{4}$ 647 (700- $\frac{3}{4}$)	1440-2 647 (700-2)	
SISAJ DME MINIMUMS				
 CIRCLING	1300-1 507 (600-1)	1360-1 567 (600-1)	1420-1 $\frac{3}{4}$ 627 (700- $\frac{3}{4}$)	1420-2 627 (700-2)

REIL Rwy 25 **L**
HIRL Rwy 7-25 **L**