

LOC I-LQG	APP CRS	Rwy Idg	5002
111.7	073°	TDZE	793
		Apt Elev	793

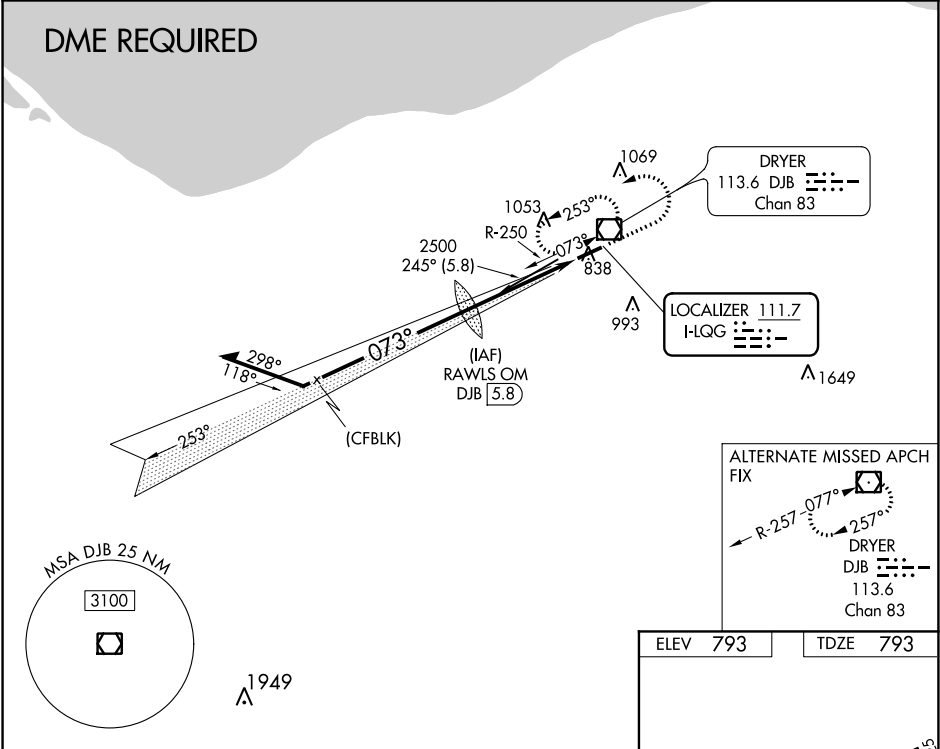
ILS or LOC RWY 7
LORAIN COUNTY RGNL (LPR)

⚠ For inoperative MALSR, increase S-LOC 7 Cats C/D visibility to 1½ mile. VDP NA with Cleveland-Hopkins Intl altimeter setting. When local altimeter setting not received, use Cleveland-Hopkins Intl altimeter setting and increase all DA 36 feet and all MDA 40 feet.

MALSR

MISSED APPROACH: Climb to 1400 then climbing left turn to 3000 on heading 270° then left turn direct DJB VOR/DME and hold.

ASOS 121.425	CLEVELAND APP CON 126.35 346.325	CLNC DEL 125.7	UNICOM 122.7 (CTAF) 0
-----------------	-------------------------------------	-------------------	---------------------------------



Remain within 10 NM

RAWLS OM DJB 5.8

2500 253°

2500 073°

GS 3.00° TCH 54

2263

1400 3000

hdg 270°

DJB

* DJB 2.8

* LOC only.

3 NM 1.4 NM

CATEGORY	A	B	C	D
S-ILS 07	993-½ 200 (200-½)			
S-LOC 07	1280-½ 487 (500-½)		1280-1 487 (500-1)	
CIRCLING	1280-1 487 (500-1)	1360-1 567 (600-1)	1420-1¾ 627 (700-1¾)	1420-2 627 (700-2)

ELEV 793	TDZE 793
----------	----------

5002 X 100

073° 4.4 NM from FAF

REIL Rwy 25 **0**

HIRL Rwy 7-25 **0**

FAF to MAP 4.4 NM

Knots	60	90	120	150	180
Min:Sec	4:24	2:56	2:12	1:46	1:28

EC-2, 03 DEC 2020 to 31 DEC 2020

EC-2, 03 DEC 2020 to 31 DEC 2020