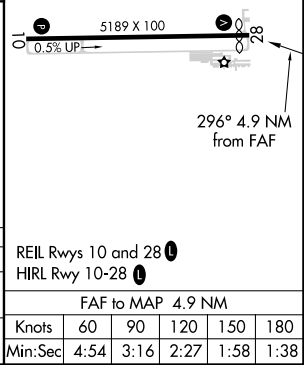
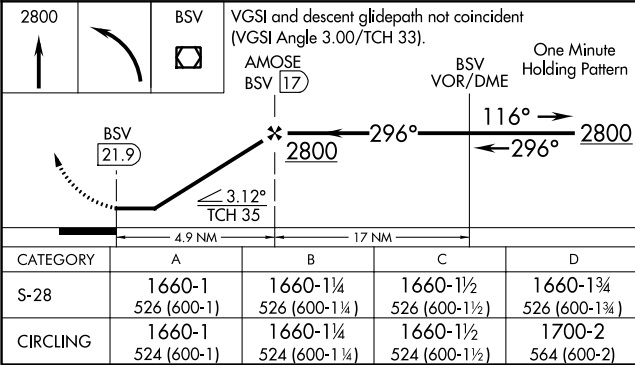
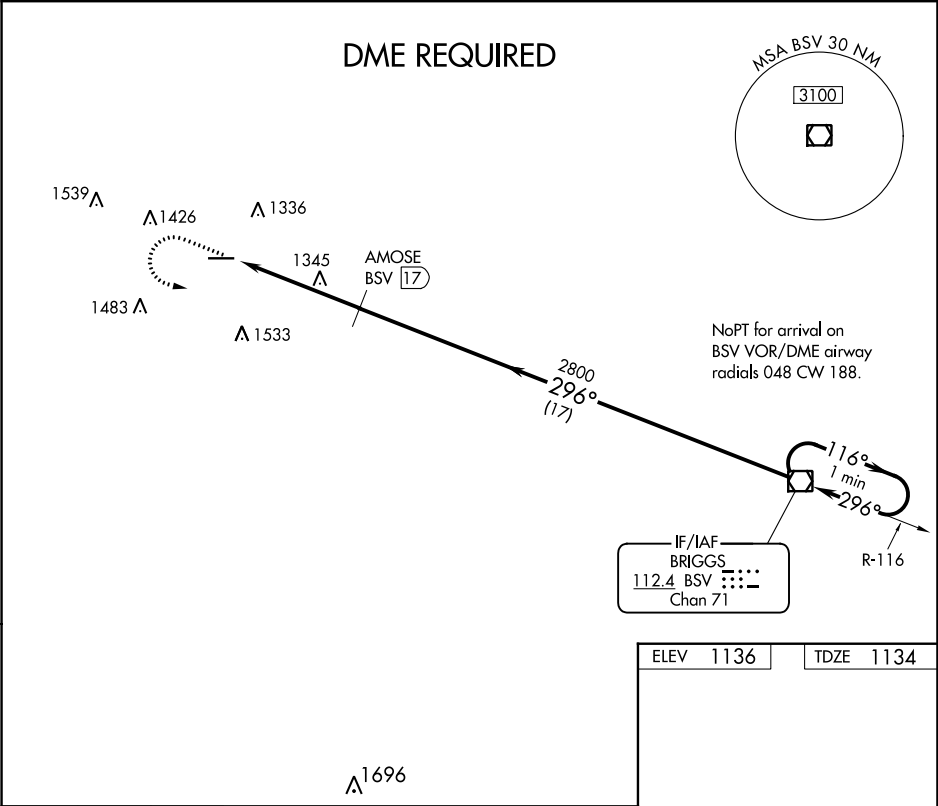


VOR/DME BSV	APP CRS	Rwy Idg	4971
112.4	296°	TDZE	1134
Chan 71		Apt Elev	1136

VOR RWY 28  
WAYNE COUNTY (BJJ)

<p><b>▼</b> DME required. Helicopter visibility reduction below ¾ SM NA. When local altimeter setting not received, use Akron-Canton Rgnl altimeter setting and increase all MDA 60 feet.</p>	<p>MISSED APPROACH: Climb to 2800 then left turn direct BSV VOR/DME and hold.</p>
---	---

ASOS 118.075	CLEVELAND APP CON ★ 118.6 371.875	CLNC DEL 121.75	UNICOM 122.8 (CTAF) 0
-----------------	--------------------------------------	--------------------	--------------------------



EC-2, 03 DEC 2020 to 31 DEC 2020

EC-2, 03 DEC 2020 to 31 DEC 2020