

WAAS CH <b>63225</b> <b>W09A</b>	APP CRS <b>092°</b>	Rwy Idg <b>4002</b> TDZE <b>922</b> Apt Elev <b>925</b>
--	------------------------	---

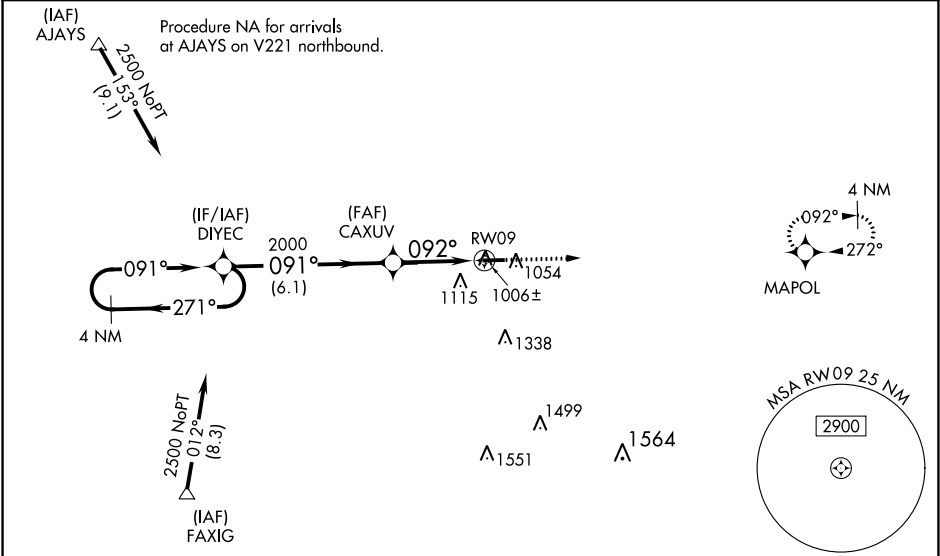
RNAV (GPS) RWY 9

PORTLAND MUNI (PLD)

Baro-VNAV NA when using Fort Wayne Intl altimeter setting. For uncompensated Baro-VNAV systems, LNAV/VNAV NA below -16°C (4°F) or above 54°C (130°F). DME/DME RNP-0.3 NA. Helicopter visibility reduction below 1 SM NA. When local altimeter setting not received, use Fort Wayne Intl altimeter setting and increase LPV DA to 1255, LNAV/VNAV DA to 1320 and all MDA 100 feet, increase LPV all Cats visibility ½ mile, LNAV/VNAV all Cats and LNAV Cat C visibility ¾ mile and Circling Cat C visibility ¼ mile. When VGSI inop, Straight-in/ Circling Rwy 9 procedure NA at night. When VGSI inop, Circling Rwy 27 NA at night.

MISSED APPROACH:  
Climb to 3000 direct MAPOL and hold.

AWOS-3 <b>124.675</b>	FORT WAYNE APP CON <b>132.15</b> (SE/NE) <b>284.6</b> <b>127.2</b> (SW/NW) <b>284.6</b>	UNICOM <b>122.8</b> (CTAF) <b>0</b>
--------------------------	---	--



Procedure NA for arrivals at FAXIG on V14 southwest bound.	ELEV 925	TDZE 922
---	----------	----------

