

WAAS CH <b>42606</b> <b>W09A</b>	APP CRS <b>092°</b>	Rwy Idg TDZE Apt Elev	<b>6500</b> <b>769</b> <b>770</b>
--	------------------------	-----------------------------	---

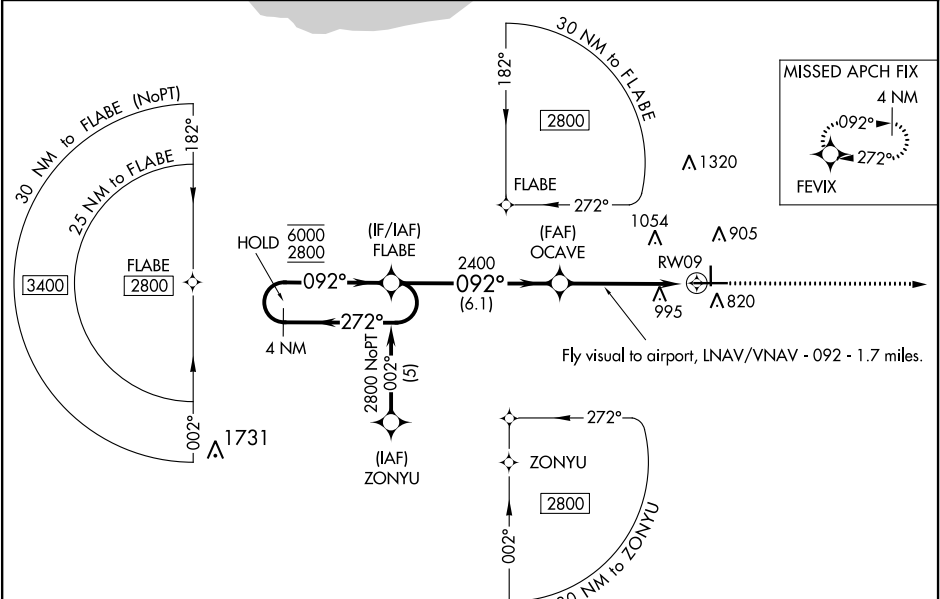
RNAV (GPS) RWY 9  
PORTER COUNTY RGNL (VPZ)

RNP APCH.

Rwy 9 helicopter visibility reduction below 3/4 SM NA. For uncompensated Baro-VNAV systems, LNAV/VNAV NA below -16°C or above 47°C.

MISSED APPROACH:  
Climb to 2600 direct FEVIX and hold.

ASOS <b>125.875</b>	SOUTH BEND APP CON ★ <b>132.05 257.8</b>	CLNC DEL <b>120.525</b>	UNICOM <b>122.725 (CTAF)</b>
------------------------	---	----------------------------	---------------------------------



Fly visual to airport, LNAV/VNAV - 092 - 1.7 miles.

4 NM Holding Pattern

FLABE

OCAVE

RW09

GP 3.00° TCH 45

2600 FEVIX

\*LNAV only.

81

4001 X 755

7001 X 150

809

092° to RW09

0.3% UP

AS

CATEGORY	A	B	C	D
LPV DA	1038-1		269 (300-1)	
LNAV/VNAV DA	1369-2		600 (600-2)	
LNAV MDA	1260-1	491 (500-1)	1260-1½ 491 (500-1½)	1260-1½ 491 (500-1½)
CIRCLING	1260-1 490 (500-1)	1300-1 530 (600-1)	1300-1½ 530 (600-1½)	1360-2 590 (600-2)

HIRL Rwy 9-27

MIRL Rwy 18-36

REIL Rws 9, 18 and 36

EC-2, 03 DEC 2020 to 31 DEC 2020

EC-2, 03 DEC 2020 to 31 DEC 2020