

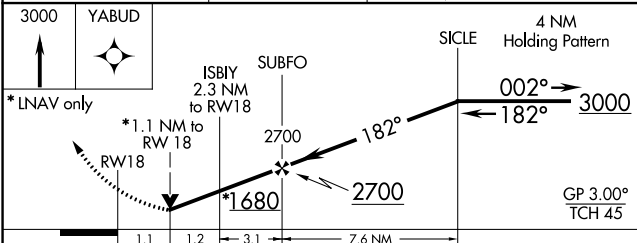
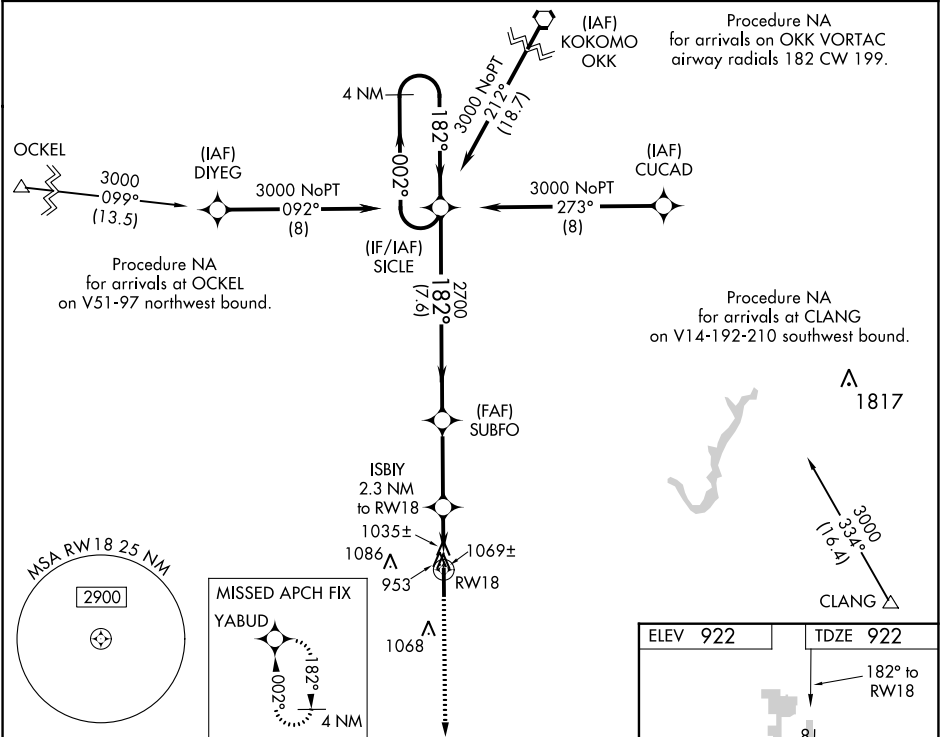
APP CRS	Rwy Idg	5500
182°	TDZE	922
	Apt Elev	922

RNAV (GPS) RWY 18  
INDIANAPOLIS EXECUTIVE (TYQ)

Baro-VNAV NA when using Indianapolis Intl altimeter setting. For uncompensated Baro-VNAV systems, LNAV/VNAV NA below -16°C (4°F) or above 33°C (91°F). DME/DME RNP-0.3 NA. Rwy 18 helicopter visibility reduction below ¾ SM NA. When local altimeter setting not received, use Indianapolis Intl altimeter setting: increase DA 62 feet and visibility all Cats ¼ mile; increase all MDA 80 feet and LNAV visibility Cat C/D ½ mile.

MISSED APPROACH: Climb to 3000 direct YABUD and hold.

AWOS-3PT 120.725	INDIANAPOLIS APP CON 124.65 127.15 317.8	GCO 121.725	UNICOM 123.05 (CTAF)
---------------------	---	----------------	-------------------------



CATEGORY	A	B	C	D
LNAV/VNAV DA	1216-1	294 (300-1)		
LNAV MDA	1320-1	398 (400-1)	1320-1½	398 (400-1½)
CIRCLING	1360-1 438 (500-1)	1380-1 458 (500-1)	1400-1½ 478 (500-1½)	1480-2 558 (600-2)

