

WAAS CH <b>45820</b> <b>W09A</b>	APP CRS <b>093°</b>	Rwy Idg TDZE Apt Elev	<b>5001</b> <b>736</b> <b>738</b>
--	------------------------	-----------------------------	---

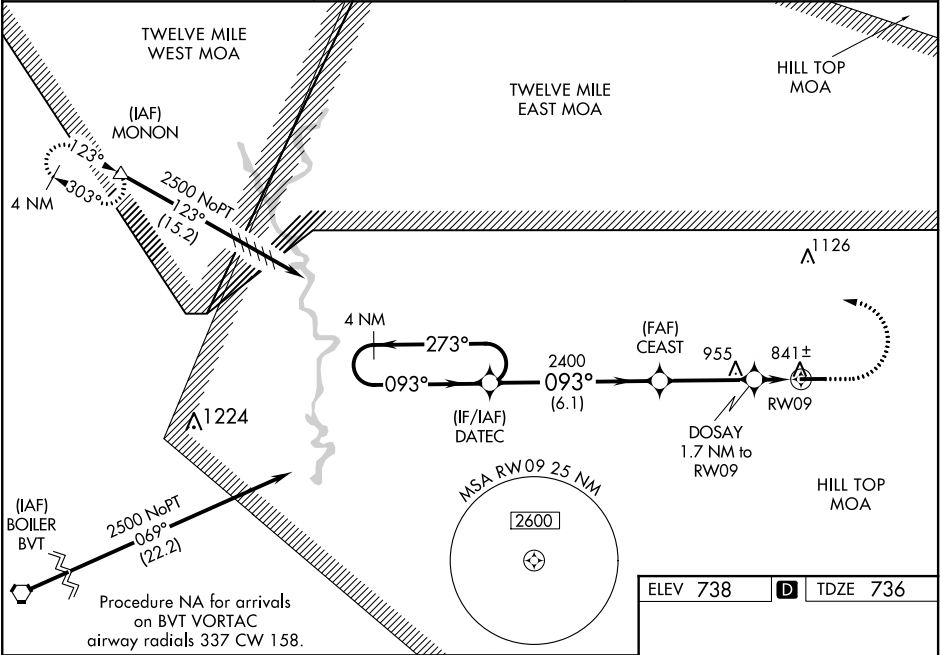
RNAV (GPS) RWY 9  
LOGANSPORT/CASS COUNTY (GGP)

**NA**

Baro-VNAV NA when using Grissom ARB altimeter setting. For uncompensated Baro-VNAV systems, LNAV/VNAV NA below -16°C (4°F) or above 39°C (102°F). Obtain local altimeter setting on CTAF; when not received, use Grissom ARB altimeter setting and increase all DA 36 feet, all MDA 40 feet, LNAV/VNAV all Cats and LNAV Cat C and D visibility 1/8 mile. When VGSi inoperative, Straight-in/Circling Rwy 9 procedure NA at night. DME/DME RNP-0.3 NA. Helicopter visibility reduction below 1 SM NA.

**MISSED APPROACH:**  
Climb to 1200, then climbing left turn to 2500 direct MONON and hold.

AWOS-3P <b>118.5</b>	GRISSOM APP CON★ <b>121.05 338.275</b>	UNICOM <b>122.8 (CTAF) 0</b>
-------------------------	---	---------------------------------



4 NM Holding Pattern

VGSI and RNAV glidepath not coincident (VGSI Angle 3.00/TCH 24).

DATEC

CEAST

DOSAY 1.7 NM to RW09

RW09

\*LNAV only

GP 3.00° TCH 40

2500

273°

093°

2400

1200

2500

MONON

6.1 NM

3.4 NM

1.7 NM

ELEV 738	<b>D</b>	TDZE 736
----------	----------	----------

5001 X 75

27

093° to RW09

MIRL Rwy 9-27 0

REIL Rwy 9 and 27 0

CATEGORY	A	B	C	D
LPV DA	991-1 255 (300-1)			
LNAV/VNAV DA	1022-1 286 (300-1)			
LNAV MDA	1100-1 364 (400-1)			
CIRCLING	1160-1 422 (500-1)	1200-1 462 (500-1)	1200-1½ 462 (500-1½)	1300-2 562 (600-2)

EC-2, 03 DEC 2020 to 31 DEC 2020

EC-2, 03 DEC 2020 to 31 DEC 2020