

WAAS CH <b>49207</b> <b>W09A</b>	APP CRS <b>091°</b>	Rwy Idg TDZE Apt Elev	<b>5000</b> <b>524</b> <b>529</b>
--	------------------------	-----------------------------	---

RNAV (GPS) RWY 9

HUNTINGBURG (HNB)

⚠

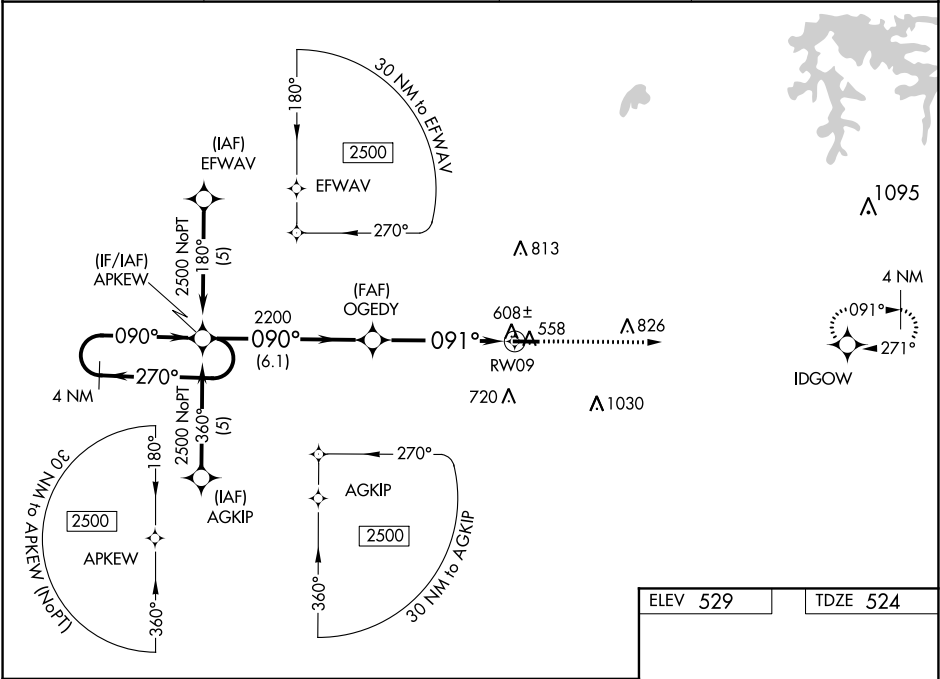
For uncompensated Baro-VNAV systems, LNAV/VNAV NA below -16°C (4°F) or above 47°C (116°F). DME/DME RNP-0.3 NA. Visibility reduction by helicopters NA.

⚠

Baro-VNAV NA when using Evansville altimeter setting.  
When local altimeter setting not received, use Evansville altimeter setting and increase all DA 85 feet and all MDA 100 feet, increase LPV and LNAV/VNAV all Cats, and LNAV Cats C and D visibility ¼ mile.

MISSED APPROACH: Climb to 2500 direct IDGOW and hold.

AWOS-3PT <b>118.250</b>	EVANSVILLE APP CON ★ <b>124.025 290.9</b>	CLNC DEL <b>118.8</b>	UNICOM <b>122.8 (CTAF) 0</b>
----------------------------	--	--------------------------	---------------------------------



4 NM Holding Pattern		APKEW	OGEDY	2500	IDGOW
2500		270°	090°	090°	091° to RWY 09
GP 3.00°		TCH 40	2200	2000	5000 X 75
6.1 NM		5.1 NM			0.3% UP
CATEGORY	A	B	C	D	
LPV DA	845-1¼ 321 (400-1¼)				
LNAV/VNAV DA	878-1¼ 354 (400-1¼)				
LNAV MDA	1020-1	496 (500-1)	1020-1¼	496 (500-1¼)	1020-1½
CIRCLING	1020-1	491 (500-1)	1020-1½	491 (500-1½)	1080-2
					MIRL Rwy 9-27 0
					REIL Rwy 9 and 27 0