

LOC I-SQK
108.35

APP CRS
185°

Rwy Idg
TDZE
Apt Elev
6503
866
866

ILS or LOC RWY 18

METTEL FIELD (CEV)

ADF required.

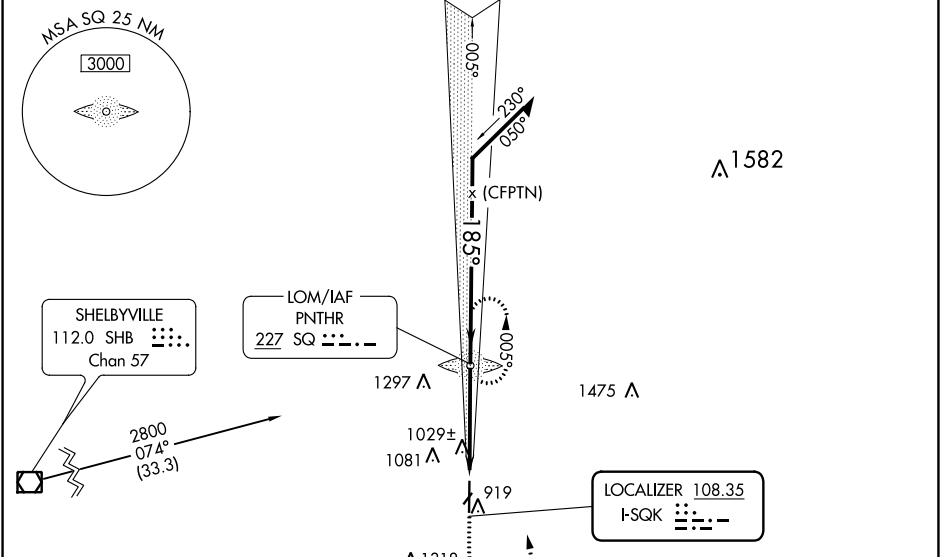
NA

Circling NA to Rwy 4 and 22. For inop MALS, increase S-LOC 18 Cats C/D visibility to 1 1/2 mile. When local altimeter setting not received, use James M Cox Dayton Intl altimeter setting and increase ILS DA to 1237 feet and visibility all Cats to 3/4 mile, increase all MDA 140 feet and LOC Cats C/D visibility to 1 1/2 mile, and Circling Cat B visibility to 1 1/4 miles and Cat C to 2 3/4 miles and Cat D to 3 miles. When using James M Cox Dayton Intl altimeter setting: for inop MALS, increase S-ILS 18 all Cats visibility to 1 mile and increase S-LOC 18 Cat A/B visibility to 1 mile and Cat C/D to 1 1/2 mile.

MALS

MISSED APPROACH:
Climb to 2800 then
left turn direct SQ LOM
and hold.

AWOS-3 118.325	COLUMBUS APP CON 118.425 352.05	UNICOM 122.8 (CTAF)
--------------------------	---	-------------------------------



ELEV 866

TDZE 866

185° 4.2 NM
from FAF

81

36

MIRL Rwy 18-36

REIL Rwy 18 and 36

FAF to MAP 4.2 NM

Knots 60 90 120 150 180

Min:Sec 4:12 2:48 2:06 1:41 1:24

CATEGORY	A	B	C	D
S-ILS 18	1116-1/2		250 (300-1/2)	
S-LOC 18	1280-1/2	414 (500-1/2)	1280-3/4	414 (500-3/4)
CIRCLING	1440-1 574 (600-1)	1540-1 674 (700-1)	1620-2 1/4 754 (800-2 1/4)	1620-2 1/2 754 (800-2 1/2)