


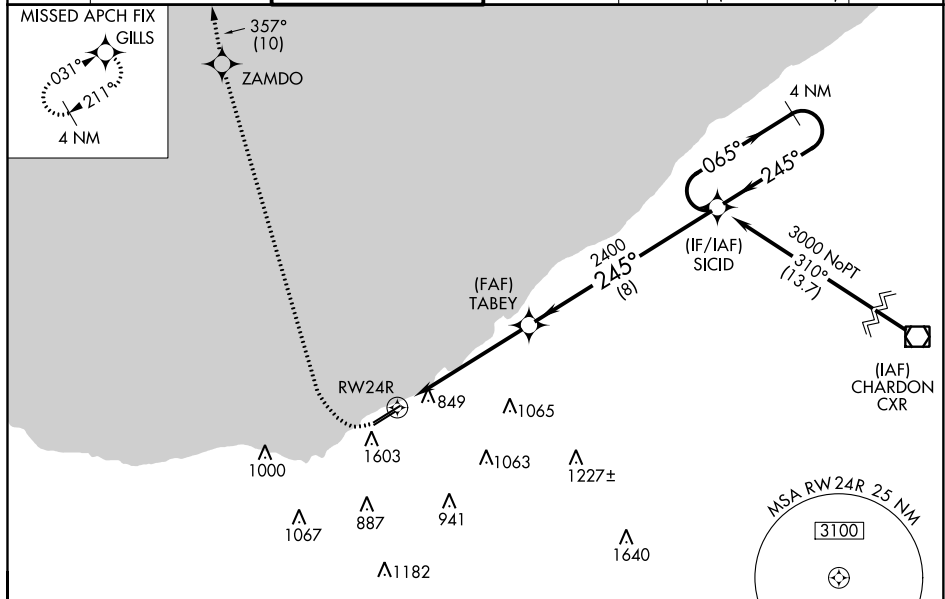


WAAS CH <b>77621</b> <b>W24A</b>	APP CRS <b>245°</b>	Rwy Idg <b>6003</b> TDZE <b>583</b> Apt Elev <b>584</b>
--	------------------------	---

RNAV (GPS) RWY 24R  
BURKE LAKEFRONT (BKL)

RNP APCH.				 For uncompensated Baro-VNAV systems, LNAV/VNAV NA below -16°C (4°F) or above 40°C (104°F). Circling Rwy 6R NA at night. Rwy 24R helicopter visibility reduction below ¾ SM NA. Circling NA southeast of Rwy 6R and 24L. For inop ALS, increase LNAV Cat C and D visibility to 3 SM.		 MISSED APPROACH: Climbing right turn to 2000 direct ZAMMO the climb to 4000 on track 357° to GILLS to hold. MISSED approach requires minimum climb of 421 feet per NM to 1900.	
 -23°C	ATIS 125.25	CLEVELAND APP CON 125.35 346.325	LAKEFRONT TOWER ★ 124.3 (CTAF) 0 339.8	GND CON 121.9 339.8	CLNC DEL 339.8	CLNC DEL 121.9 (when twr closed)	UNICOM 122.95



ELEV	584	<b>D</b>	TDZE	583
------	-----	----------	------	-----

