

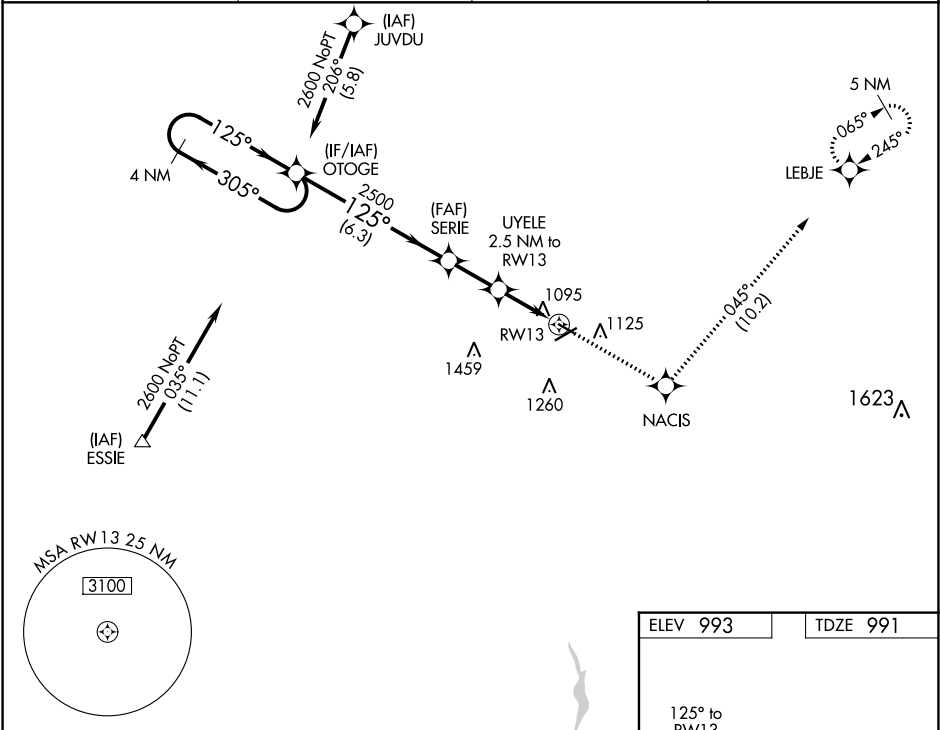
APP CRS	Rwy Idg	3498
125°	TDZE	991
	Apt Elev	993

RNAV (GPS) RWY 13

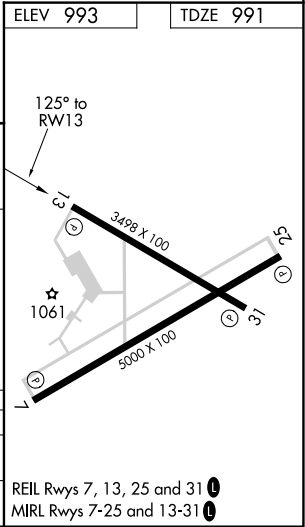
MARION MUNI (MNN)

RNP APCH.	MISSED APPROACH: Climb to 3000 direct NACIS and on track 045° to LEBJE and hold.
▼ Rwy 13 helicopter visibility reduction below ¼ SM NA. VDP NA when using Ohio State University altimeter setting. When local altimeter setting not received, use Ohio State University altimeter setting: increase all MDAs 100 feet; increase LNAV Cats C/D and Circling Cat C visibility ¾ SM.	

ASOS 119.975	CLEVELAND APP CON ★ 124.2 360.65	CLNC DEL 126.8	UNICOM 122.8 (CTAF) 0
-----------------	-------------------------------------	-------------------	--------------------------



VGSi and descent angles not coincident (VGSi Angle 3.00/TCH 21).			
4 NM Holding Pattern			
OTOGESERIEUYELE 2.5 NM to RW13			
2600 305° 125° 2500 3.04° TCH 40 1800 1.1 NM to RW13			
6.3 NM 2.1 NM 1.4 NM 1.1			
CATEGORY	A	B	C
LNAV MDA	1360-1	369 (400-1)	1360-1¼ 369 (400-1¼)
CIRCLING	1480-1 487 (500-1)	1500-1 507 (600-1)	1540-1½ 547 (600-1½)



EC-2, 03 DEC 2020 to 31 DEC 2020

EC-2, 03 DEC 2020 to 31 DEC 2020