

WAAS CH 86401 W27A	APP CRS 274°	Rwy Idg 5000 TDZE 880 Apt Elev 880
--	------------------------	---

RNAV (GPS) RWY 27

DE KALB COUNTY (GWB)

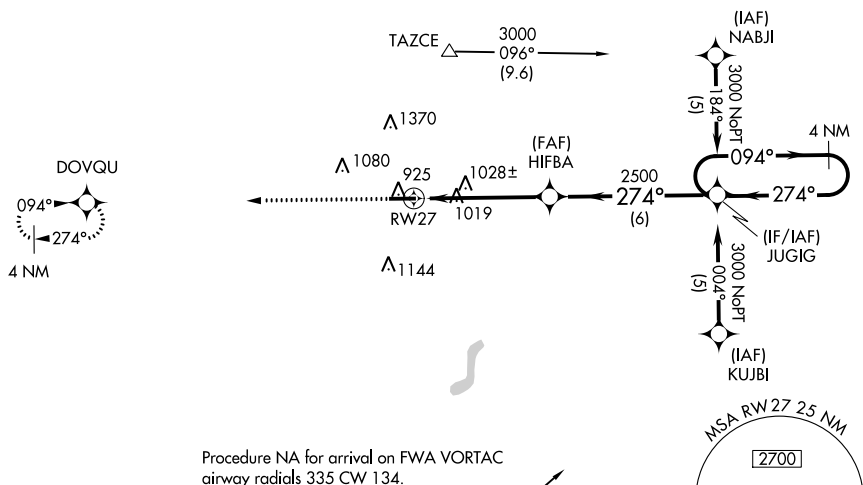


For uncompensated Baro-VNAV systems, LNAV/VNAV NA below -16°C (4°F) or above 54°C (130°F). DME/DME RNP-0.3 NA.



MISSED APPROACH:
Climb to 3000 direct
DOVQU and hold.

AWOS-3 124.15	FORT WAYNE APP CON 127.2 284.6	CLNC DEL 126.6	UNICOM 123.0 (CTAF) ①
-------------------------	--	--------------------------	---------------------------------



Procedure NA for arrival on FWA VORTAC
airway radials 335 CW 134.

Diagram illustrating the RW27 instrument approach procedure. The diagram shows a 5000 x 100 runway with a 274° heading to RW27. A 3000' holding pattern is shown with a 274° heading. The approach is for RW27, with a 274° heading to the runway. The diagram includes a 3000' holding pattern, a 274° heading to RW27, and a 274° heading to the runway. The diagram also shows a 3000' holding pattern, a 274° heading to RW27, and a 274° heading to the runway. The diagram includes a 3000' holding pattern, a 274° heading to RW27, and a 274° heading to the runway. The diagram also shows a 3000' holding pattern, a 274° heading to RW27, and a 274° heading to the runway.

AUBURN, INDIANA

Orig-D 27APR17

DE KALB COUNTY (GWB)

41°18'N-85°04'W

RNAV (GPS) RWY 27