

VORTAC OOM
110.2
Chan **39**

APP CRS
058°

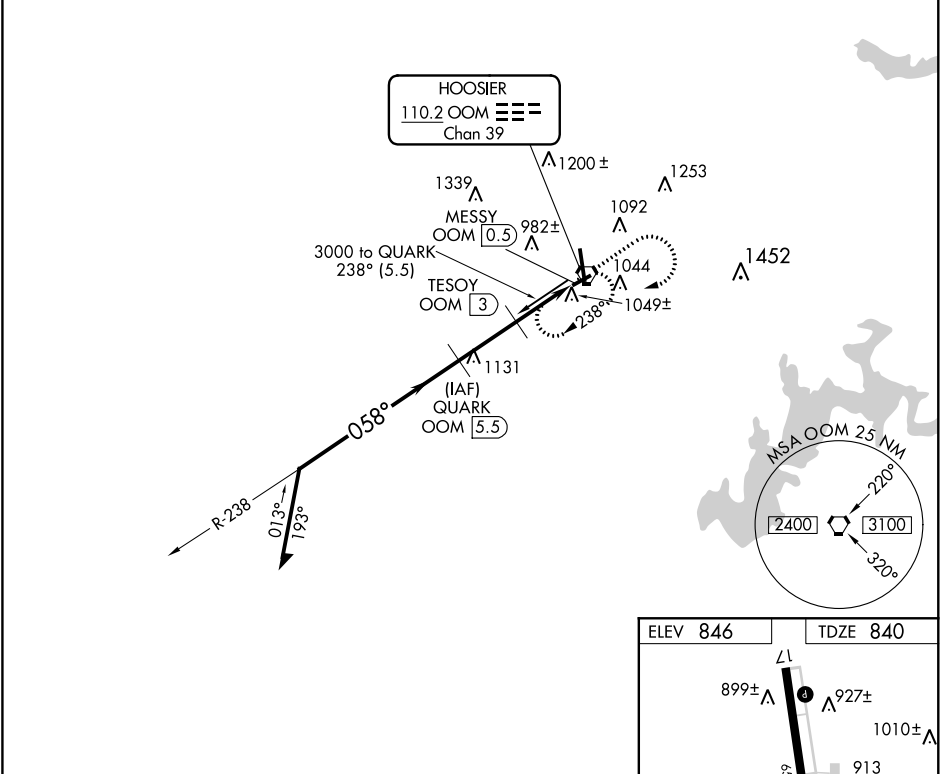
Rwy Idg **3494**
TDZE **840**
Apt Elev **846**

VOR/DME RWY 6
MONROE COUNTY (BMG)

⚠ Rwy 6 Straight-in and Circling and Circling to Rwy 24 NA at night. Helicopter visibility reduction below 1 SM NA. When local altimeter setting not received, use Terre Haute Rgnl altimeter setting and increase all MDA 140 feet and S-6 Cat C and D visibility ¾ mile, Circling Cat C visibility ½ mile, and Circling Cat D visibility ¼ mile.

MISSED APPROACH: Climb to 2000 then climbing right turn to 3000 direct OOM VORTAC and hold.

ASOS 110.2	HULMAN APP CON 128.025 339.8	BLOOMINGTON TOWER ★ 120.775 (CTAF) 0	GND CON 121.9	UNICOM 122.95
----------------------	----------------------------------------	------------------------------------------------	-------------------------	-------------------------



Remain within 10 NM

QUARK OOM [5.5]

3000

058°

238°

2500

1680

3.09° TCH 37

TESQY OOM [3]

MESSY OOM [0.5]

2000

3000

OOM

VGSI and descent angles not coincident (VGSI Angle 4.00/TCH 37).

2.5 NM

2.5 NM

ELEV 846

TDZE 840

058° 5 NM from FAF

951±

899±

927±

1010±

913

917

917±

931±

891±

921±

35

3798

6500 X 150

MIRL Rwy 6-24 0

HIRL Rwy 17-35 0

REIL Rwy 17

CATEGORY	A	B	C	D
S-6	1300-1	460 (500-1)	1300-1¾	460 (500-1¾)
CIRCLING	1380-1 534 (600-1)	1400-1 554 (600-1)	1400-1½ 554 (600-1½)	1400-2 554 (600-2)