

WAAS CH <b>56412</b> <b>W17A</b>	APP CRS <b>174°</b>	Rwy Idg TDZE Apt Elev	<b>6500</b> <b>845</b> <b>846</b>
--	------------------------	-----------------------------	---

RNAV (GPS) RWY 17

MONROE COUNTY (BMG)

RNP APCH.

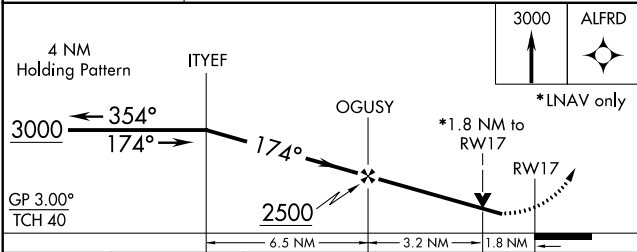
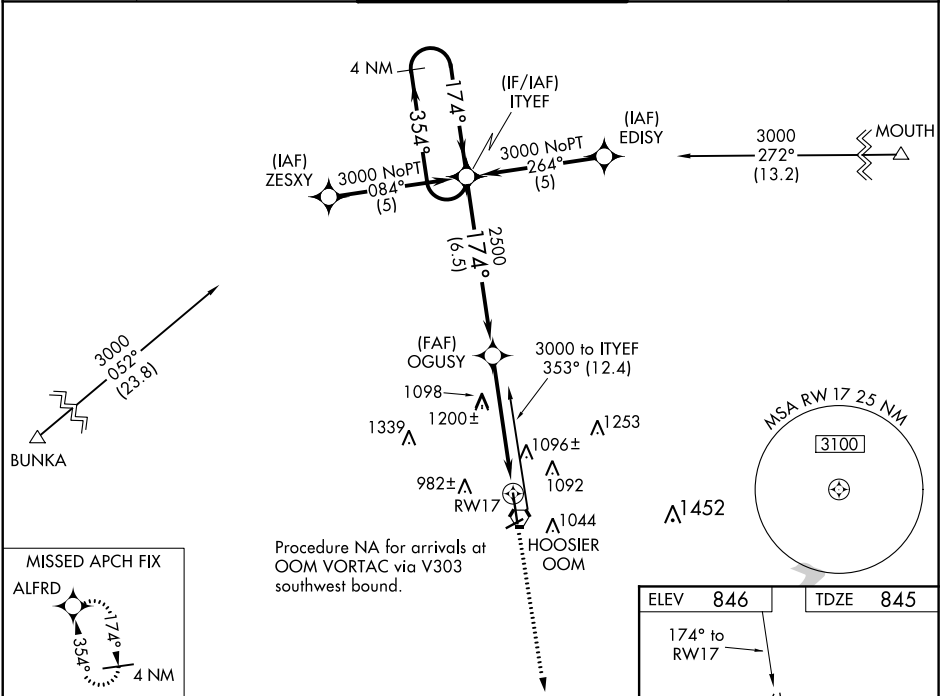
▼

▲

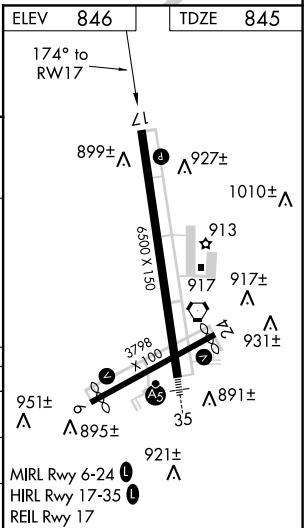
For uncompensated Baro-VNAV systems, LNAV/VNAV NA below -16°C (4°F) or above 47°C (116°F). Rwy 17 helicopter visibility reduction below ¾ SM NA. When local altimeter setting not received, use Terre Haute Rgnl altimeter setting and increase all DA 121 feet and all MDA 140 feet. Increase LPV all Cats, LNAV/VNAV all Cats, LNAV Cat C/D visibility ½ mile.

MISSED APPROACH: Climb to 3000 direct ALFRD and hold.

ASOS <b>110.2</b>	HULMAN APP CON <b>128.025 339.8</b>	BLOOMINGTON TOWER ★ <b>120.775 (CTAF) 0</b>	GND CON <b>121.9</b>	UNICOM <b>122.95</b>
----------------------	--	--	-------------------------	-------------------------



CATEGORY	A	B	C	D
LPV DA	1229-1¼	384 (400-1¼)		
LNAV/VNAV DA	1404-2	559 (600-2)		
LNAV MDA	1460-1 614 (700-1)	1460-1¾ 614 (700-1¾)	1460-2 614 (700-2)	



EC-2, 03 DEC 2020 to 31 DEC 2020

EC-2, 03 DEC 2020 to 31 DEC 2020