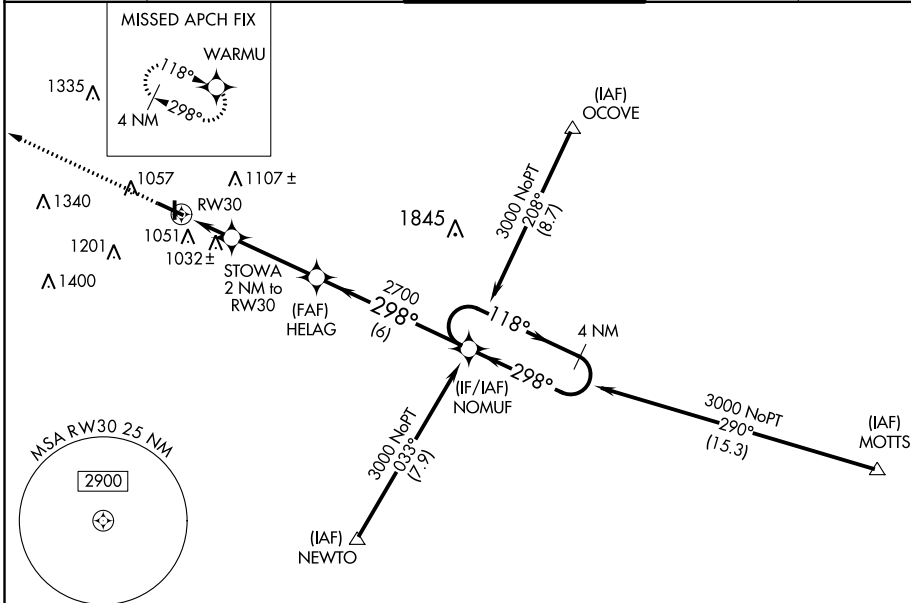


WAAS CH 56415 W30A	APP CRS 298°	Rwy Idg 5320 TDZE 919 Apt Elev 919
--	------------------------	---

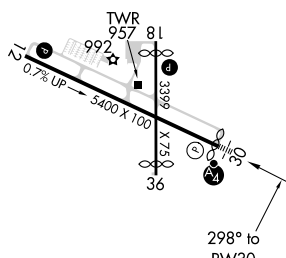
For uncompensated Baro-VNAV systems, LNAV/VNAV NA below -16°C (4°F) or above 47°C (116°F). When local altimeter setting not received, use Muncie altimeter setting and increase all DA 32 feet and all MDA 40 feet, and increase LPV and LNAV/VNAV all Cats and LNAV Cat C visibility ¼ mile. Inoperative table does not apply. Circling Rwy 12, 36 NA at night. Rwy 30 helicopter visibility reduction below ¾ SM NA.



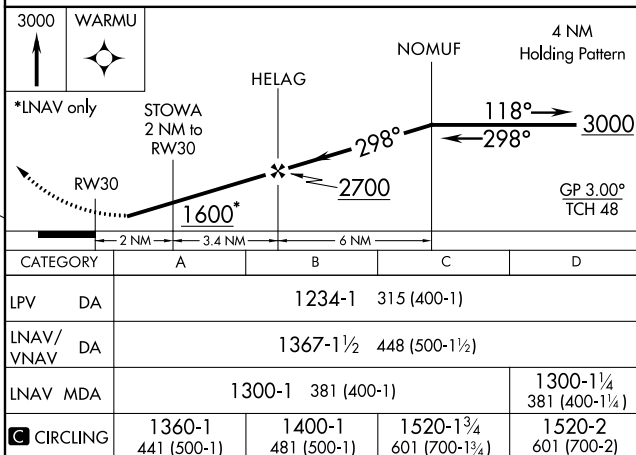

MISSED APPROACH:
Climb to 3000 direct
WARMU and hold.

UNICOM
122.95

TDZE 919



REIL Rwy 12
MIRL Rwy 12-30 and 18-36 **L**



A
40°07'N-85°37'W

ANDERSON MUNI-DARLINGTON FIELD (AID)
W RNAV (GPS) RWY 30