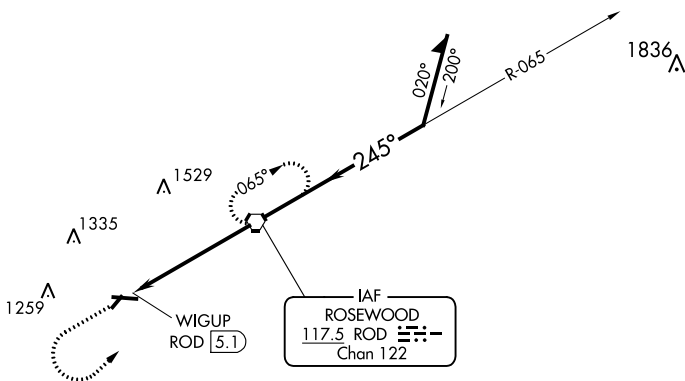


20254

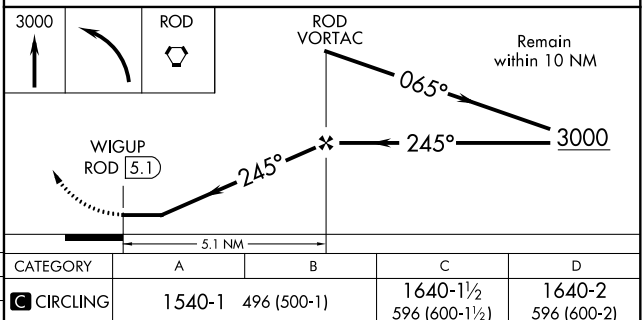
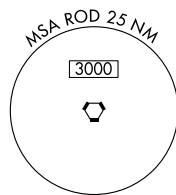
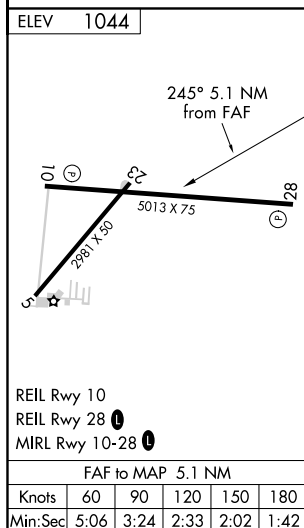
VOR-A
SIDNEY MUNI (SCA)

MISSED APPROACH: Climb to 3000 then left turn direct ROD VORTAC and hold.

AWOS-3 120.425	COLUMBUS APP CON 118.425 294.5	UNICOM 123.05 (CTAF) 0
--------------------------	--	----------------------------------



NoPT for arrivals on ROD Vortac airway radials 314 CW 088.



SIDNEY MUNI (SCA)
VOR-A

40°14'N-84°09'W

EC-2, 03 DEC 2020 to 31 DEC 2020