

SIDNEY, OHIO

AL-5047 (FAA)

19115

WAAS CH 82234 W28A	APP CRS 279°	Rwy Idg TDZE Apt Elev	5013 1044 1044
--	------------------------	-----------------------------	---

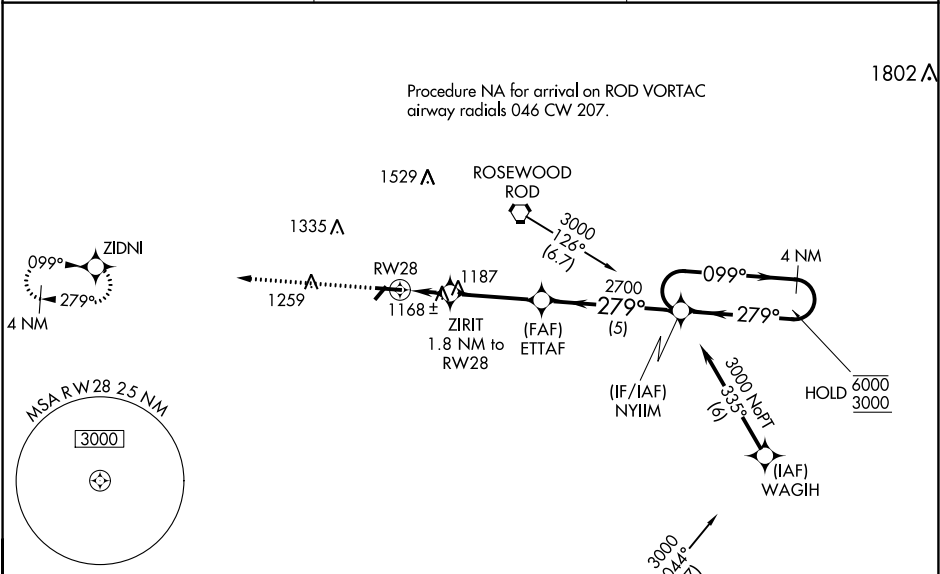
RNAV (GPS) RWY 28
SIDNEY MUNI (SCA)

RNP APCH.

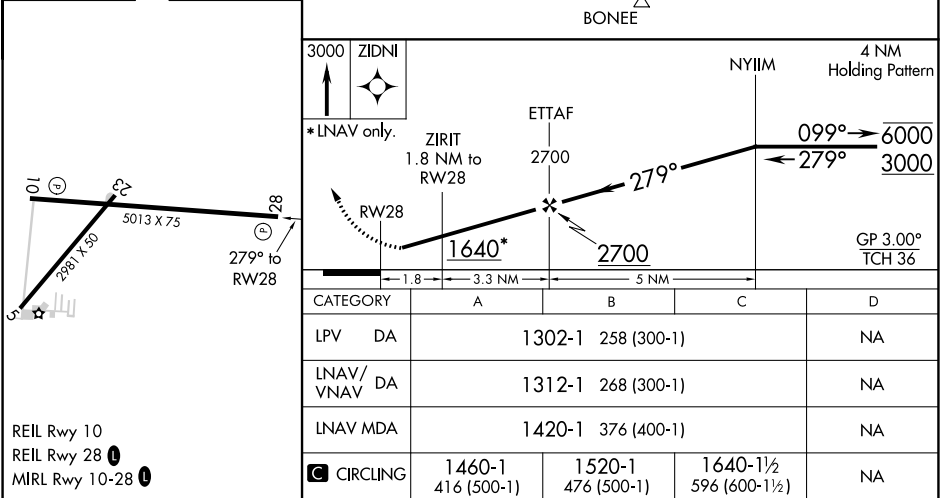
▼ Rwy 28 helicopter visibility reduction below 1 SM NA. Baro-VNAV NA when using James M. Cox Dayton Intl altimeter setting. For uncompensated Baro-VNAV systems, LNAV/VNAV NA below -22°C or above 54°C. When local altimeter setting not received, use James M. Cox Dayton Intl altimeter setting: increase LPV DA to 1355; increase LNAV/VNAV DA to 1365; increase all MDA 60 feet and LNAV Cat C visibility and Circling Cat C visibility ¼ SM. Straight-in Rwy 28 at night, operational VGSI required, remain at or above VGSI glidepath until threshold.

⚠ NA MISSED APPROACH: Climb to 3000 direct ZIDNI and hold.

AWOS-3 120.425	COLUMBUS APP CON 118.425 294.5	UNICOM 123.05 (CTAF) 0
--------------------------	--	---



ELEV 1044	TDZE 1044
------------------	------------------



SIDNEY, OHIO

Amdt 1A 13SEP18

40°14'N-84°09'W

SIDNEY MUNI (SCA)

RNAV (GPS) RWY 28

EC-2, 03 DEC 2020 to 31 DEC 2020

EC-2, 03 DEC 2020 to 31 DEC 2020