

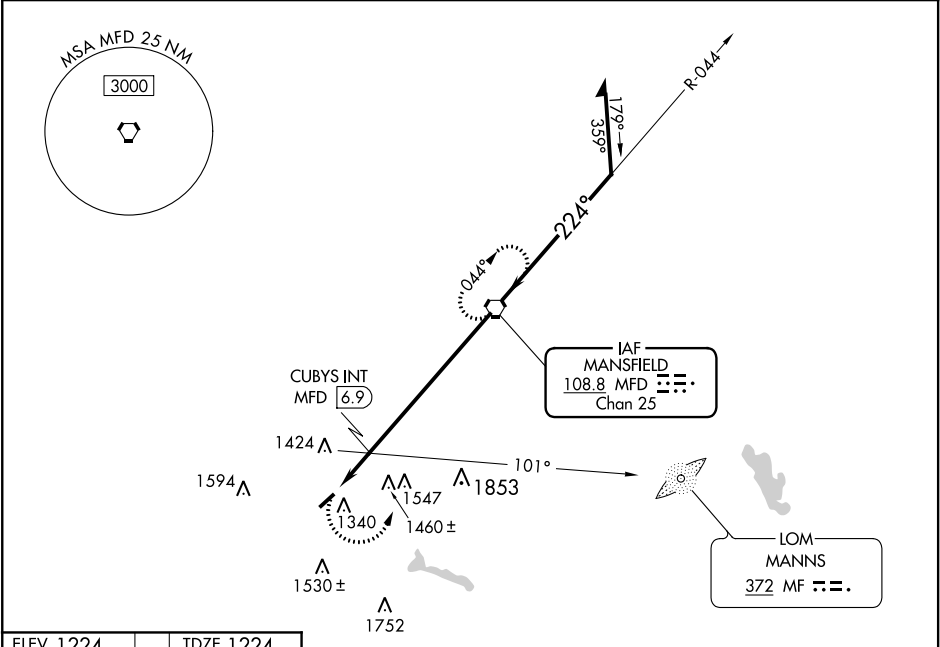
VORTAC MFD	APP CRS	Rwy Idg	3504
108.8	224°	TDZE	1224
Chan 25		Apt Elev	1224

VOR RWY 23

GALLION MUNI (GQQ)

RADAR required for procedure entry.		MISSED APPROACH: Climbing left turn to 2900 direct MFD VORTAC and hold.
Procedure NA at night. Use Mansfield altimeter setting; when not received, use Marion altimeter setting and increase all MDA 40 feet and increase CUBYS fix minimums S-23 and Circling Cat C visibility ½ SM. Rwy 23 helicopter visibility reduction below 1 SM NA.		

CLEVELAND APP CON ★	CLNC DEL	UNICOM
124.2 360.65	126.8	122.8 (CTAF) 0



ELEV 1224	TDZE 1224	2900 MFD VGSi and descent angles not coincident (VGSi Angle 3.00/TCH 38).				Remain within 10 NM
224° 8.9 NM from FAF		CUBYS INT MFD 6.9		MFD VORTAC		
3504 175		MFD 8.9	3.49° TCH 40	044°		
		*2000		224°		3000
		2 NM		6.9 NM		* 2040 when using Marion altimeter setting.
		CATEGORY	A	B	C	D
		S-23	2000-1 776 (800-1)	2000-1¼ 776 (800-1¼)	2000-2½ 776 (800-2½)	NA
		CIRCLING	2000-1 776 (800-1)	2000-1¼ 776 (800-1¼)	2000-2½ 776 (800-2½)	NA
		CUBYS FIX MINIMUMS				
		S-23	1760-1	536 (600-1)	1760-1½ 536 (600-1½)	NA
		CIRCLING	1800-1	576 (600-1)	1800-1½ 576 (600-1½)	NA

REIL Rwy 5 and 23 0
MIRL Rwy 5-23 0

FAF to MAP 8.9 NM					
Knots	60	90	120	150	180
Min:Sec	8:54	5:56	4:27	3:34	2:58

GALLION, OHIO

Amdt 13B 24MAY18

40°45'N-82°43'W

GALLION MUNI (GQQ)

VOR RWY 23