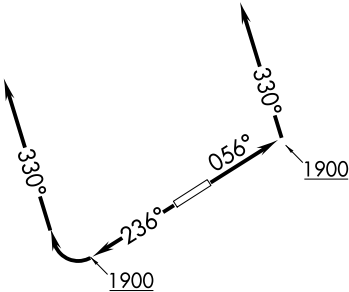
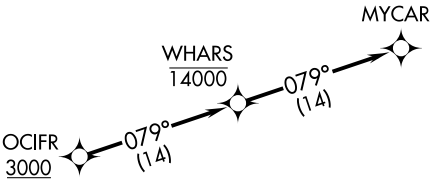


AWOS-3
119.950
CLNC DEL
121.85 (when tower closed)
GND CON
121.85
COUNTY TOWER ★
118.5 (CTAF)
CLEVELAND DEP CON
125.35 346.325

TOP ALTITUDE:
ASSIGNED BY ATC

NOTE: RNAV 1.
NOTE: RADAR required.
NOTE: DME/DME/IRU or GPS required.



TAKEOFF MINIMUMS:
Rwys 6, 24: Standard
with minimum climb of
500' per NM to 1400.

NOTE: Chart not to scale.



DEPARTURE ROUTE DESCRIPTION

TAKEOFF RUNWAY 6: Climb on heading 056° to 1900, then on heading 330° or as assigned by ATC for RADAR vectors to cross OCIFR at or above 3000, thence....
TAKEOFF RUNWAY 24: Climb on heading 236° to 1900, then right turn on heading 330° or as assigned by ATC for RADAR vectors to cross OCIFR at or above 3000, thence....
....on track 079° to cross WHARS at or below 14000, then on track 079° to MYCAR.
Maintain altitude assigned by ATC, expect filed altitude ten minutes after departure.

EC-2, 03 DEC 2020 to 31 DEC 2020

EC-2, 03 DEC 2020 to 31 DEC 2020